

Mul-T-Lock exclusive feature

Introducing Premium Protection for Commercial Premises



MTL™ 800

As we move through 2023, such mechanical high security systems are evolving and becoming more advanced and sophisticated, incorporating new patented technologies and design features to enhance their effectiveness.

Claire Blakemore, Managing Director of Mul-T-Lock UK, highlights the latest issues



facing commercial premises. She looks at how the security specialist is working with its network of professional locksmiths across the UK to deliver solutions such as MTL™ 800 premium platform to present the greatest commercial property protection.

In 2023, growing commercial building security trends will have a substantial influence on property management. With shifting building occupation levels, flexible working hours, and more complex hazards to organisations, both in the physical and cyber realms, as well as external and internal threats, security must be prioritised.

Small investments and changes to security can make a significant difference.

Upgrades that can provide an added layer of protection against theft and vandalism, both cited as prevalent in Government statistics from the Commercial Victimization Survey (CVS.)

Going right back to basics of mechanical security and upgrading locks not only prevent criminal activity, but also help employees and customers feel safer and more secure.

You can have the most sophisticated, internet enabled, biometric scanning, visual verification or access control system in the world but if the locks are of poor design and poor quality, then security will be breached swiftly.

MTL™800 is a new Mul-T-Lock cylinder platform that is designed to provide a high level of security for commercial and industrial applications.



With maximum key copy protection that is patented until 2039, one of its key features is a locking bar mechanism, that engages with 5 horizontal fingers pins located within the cylinder.

This creates an additional security layer, alongside a patented moving element on the key blade's tip that engages with a unique pin at the rear of the cylinder and our next generation of Mul-T-Lock's field-proven telescopic pin technology, forming a unique triple locking system.

Another important feature of the MTL™800 is the lock cylinder is made from hardened steel, which provides a high degree of resistance to drilling and other forms of physical attack. In addition, the keyway is protected by a hardened steel plate, which further enhances the lock's resistance to picking and drilling.

Designed and engineered to set the standard

MTL™800 can be used in a wide range of applications, including doors, gates, cabinets, and safes. Designed to be very easy to install by a professional Mul-T-Lock locksmith dealer is what makes MTL™800 the ultimate choice for commercial and industrial applications, where time is of the essence.

The MTL™800 is protected by a weather-resistant cover, which makes it ideal for use in outdoor applications. The lock is designed to withstand a wide range of environmental conditions, including extreme temperatures, high humidity, and exposure to chemicals and other corrosive substances.

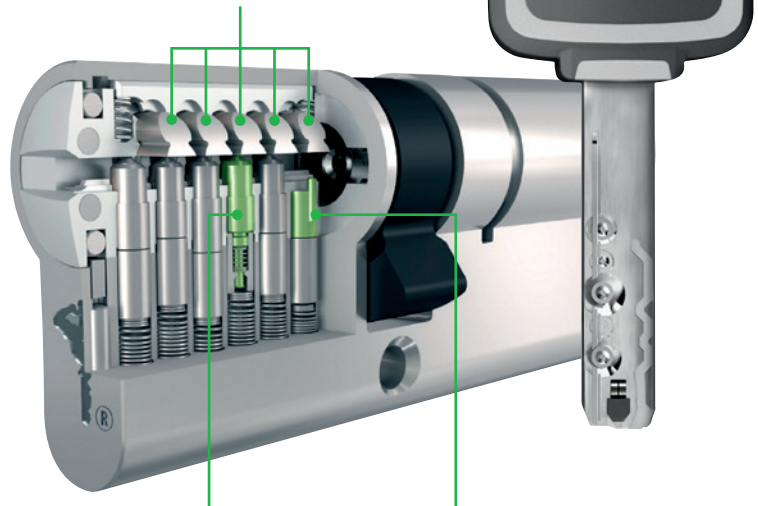
The flexible nature of MTL™800 ensures it can be integrated into a larger patented master key system. The lock can be used in conjunction with other Mul-T-Lock products, such as high security padlocks and innovative electromechanical systems, to create a comprehensive security solution that can be easily managed and controlled, even remotely.

MTL™800

Premium Security Solution



A powerful locking bar mechanism interacts with 5 unique horizontal finger pins.



MTL™800 integrates the next generation of Mul-T-Lock's field-proven telescopic pin technology.



A double alpha spring - a patented moving element on the key blade's tip, engages with a unique pin at the rear of the cylinder, creating an additional security layer.

Multiple advanced features make MTL™800 the stand-out, high security choice.

Features & benefits

- Provides a combination of 3 independent locking components to create a powerful locking solution
- High-security locking bar that interacts with 5 unique horizontal finger pins for an added layer of protection
- Double alpha spring - a patented moving element on the key blade's tip, engages with a unique pin at the rear of the cylinder, creating an added security layer
- Keyed-alike and master keyable for added convenience
- Wide range of cylinder and padlock types and sizes to fit every application
- Quick and easy to pin and assemble, using the same key machine and pinning kits as Mul-T-Lock's previous patented platforms
- Patented key protection until 2039 for guaranteed legal protection against unauthorised key duplication
- Bespoke key inserts to promote your business
- Flat reversible key with variety of key options from nylon head, nylon head with key inserts, all metal and anti-bacterial

Mul-T-Lock exclusive feature

"Its flexible design means that it could accommodate the unique requirements of our facility... we can be assured that our assets are secure with the relevant staff having access to the required locations"

STEFFAN GEORGE, MANAGING DIRECTOR, MASTER LOCKSMITHS ASSOCIATION

The lock of choice for the MLA Headquarters

The MLA, established to set and promote standards of conduct, practice and materials within the locksmithing industry, has embraced the features and benefits of the new MTL™ 800 mechanical platform.

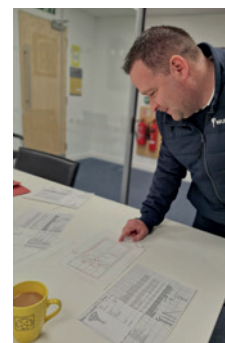
Says Steffan George, Managing Director of the MLA: "As the main trade association for the locksmithing industry in the UK, we have a duty to stay abreast of latest product solutions and ensure we can showcase the best protection in our Rugby headquarters.

"Having had a Mul-T-Lock master key system at our original premises in Woodford Halse, we were well aware of the quality and capabilities of MTL products. We were very keen to take up the kind offer of the MTL™ 800 system, with its offering of a proven reliability and enhanced protection.

"Its flexible design means that it could accommodate the unique requirements of our facility. And coming from Mul-T-Lock, whom we are delighted to see celebrating 50 years in quality and robust mechanical locking design this year, we can be assured that our assets are secure with the relevant staff having access to the required locations, as well as facilitating training on a weekend."

In summary, the features of Mul-T-Lock's MTL™ 800 platform, make it one of the most secure cylinder platforms on the market today when it comes to securing commercial premises.

Its recognition by the MLA reinforces that the foundation stone for all good security will be the locking mechanism, especially the quality of the cylinder. The capability MTL™ 800 as a powerful premium platform in its robust design, key control and integration capacity with other security solutions, are all trends that are helping to make it an even more effective way to protect commercial premises.



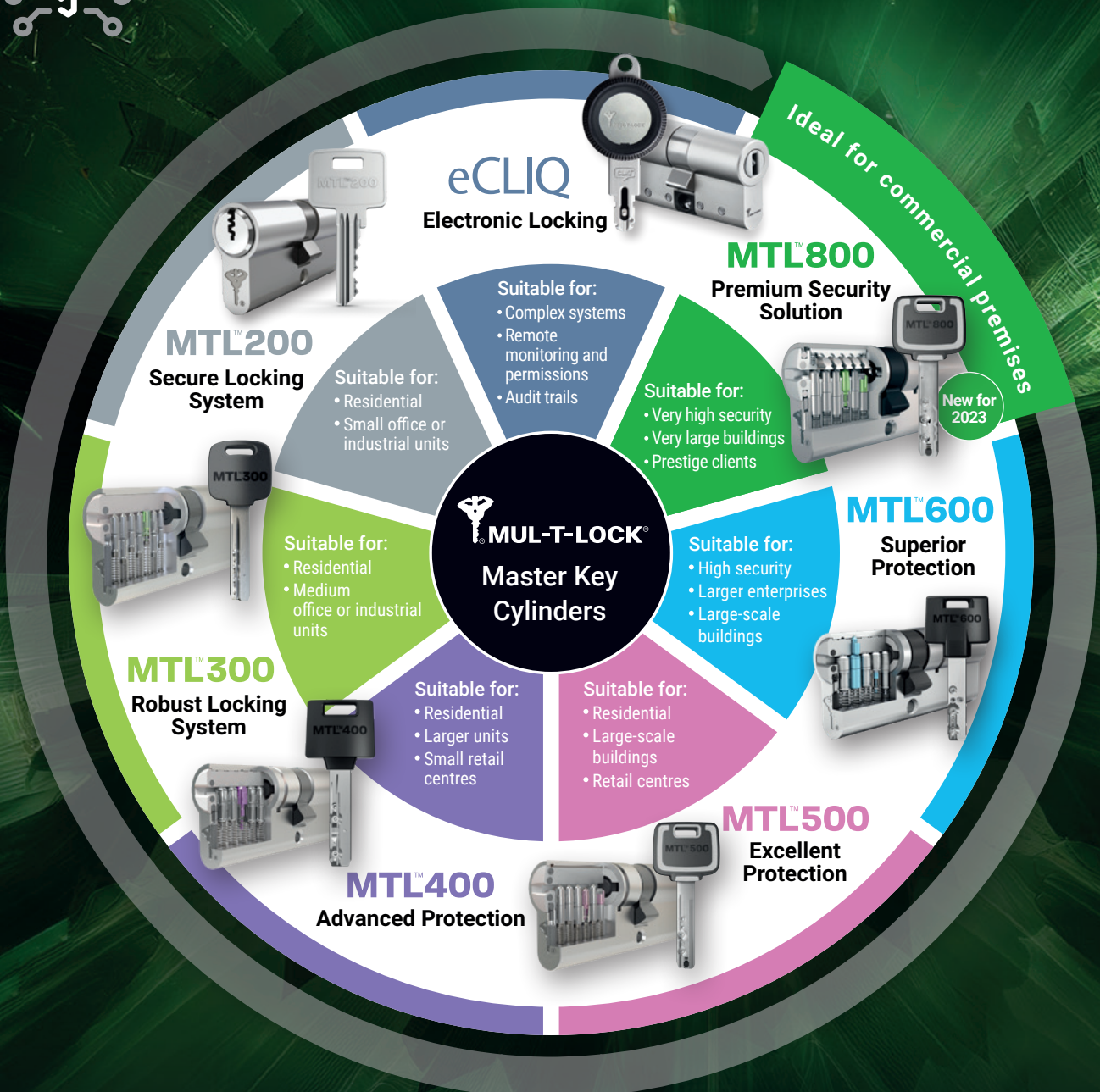
MTL™ 800 being fitted throughout the MLA Headquarters.



For more information on Mul-T-Lock's range of mechanical and electro-mechanical locking solutions, please visit mul-t-lock.co.uk

The complete solution for all your master key needs

Mul-T-Lock has patent protected cylinder platforms suitable for every master key requirement. Available with high security mechanical suites, capable of small to large scale complex designs. Or fully electronic systems, offering audit trails, timed access, remote monitoring, and permissions. With a wide range of cylinder types, padlocks, and hasp locks, whatever your master key suite needs are, we have the security answer waiting for you.



The Mul-T-Lock name, the muscleman logo, in the field of locking products, the MTL name, and any other name, mark, or logo used by Mul-T-Lock and marked by a [™] or [®] sign, are registered/pending or otherwise owned trademarks of Mul-T-Lock Ltd. and/or its affiliates 2023.