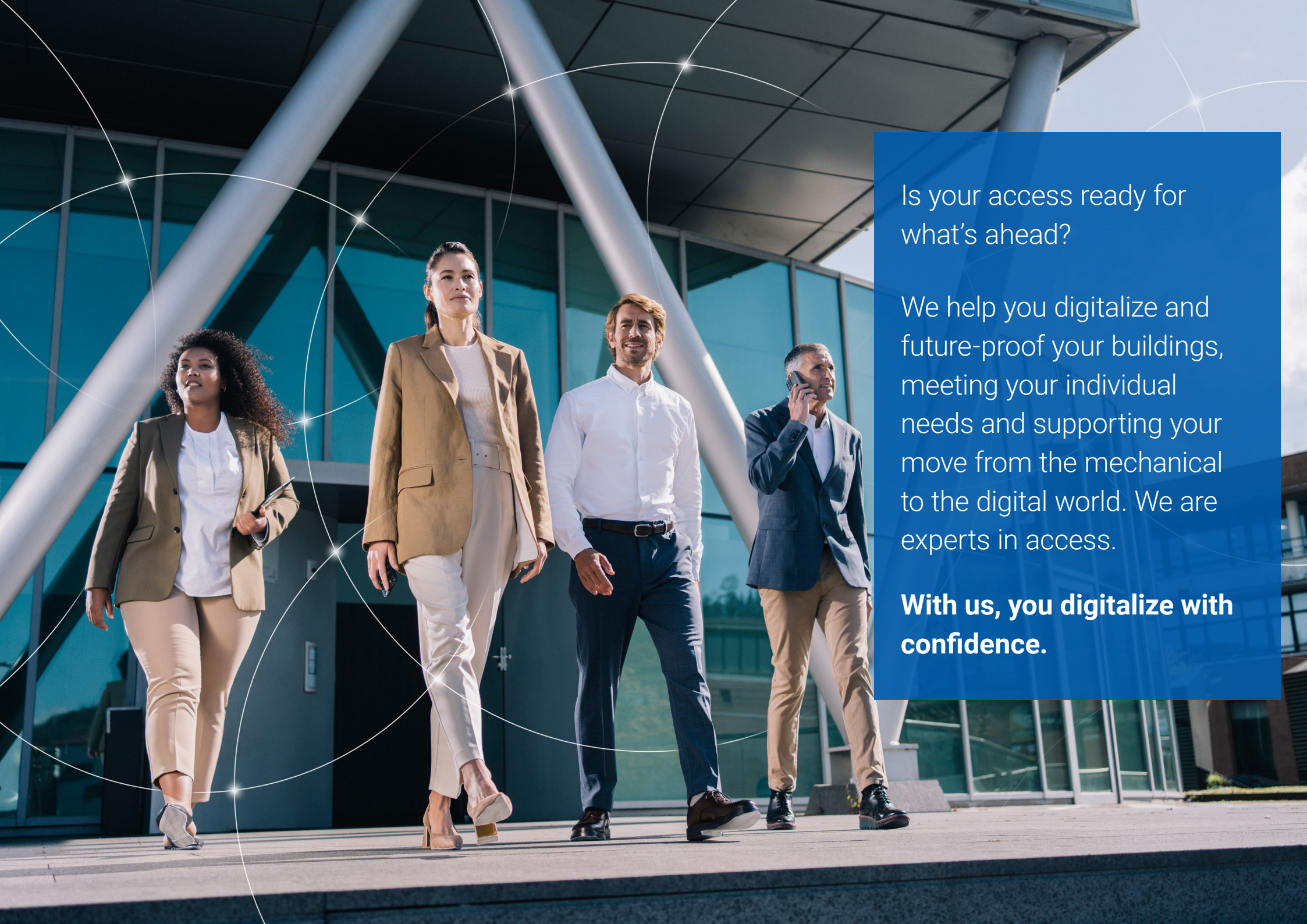




eCLIQ – Your electronic key to digital access

Life is easier when you just CLIQ®





Is your access ready for what's ahead?

We help you digitalize and future-proof your buildings, meeting your individual needs and supporting your move from the mechanical to the digital world. We are experts in access.

**With us, you digitalize with confidence.**



People come and go  
through buildings  
like never before

The need to manage access  
has evolved beyond security

New demands and challenges have arisen:

### **Security**

- Stop the security threat caused by lost keys
- Monitor access and events
- Boost cybersecurity
- Provide a safe workplace for staff and visitors

### **Convenience**

- Issue users with intuitive credentials
- Simplify access and security management
- Work smarter with cloud management

### **Flexibility**

- Make better use of offices and other workspaces
- Enable efficient, agile workflows

### **Cost efficiency**

- Save time and money wasted dealing with lost keys
- Reduce ecological footprint and improve sustainability performance
- Define a concrete ROI for security enhancements

Trust a global leader to show  
you smarter technologies

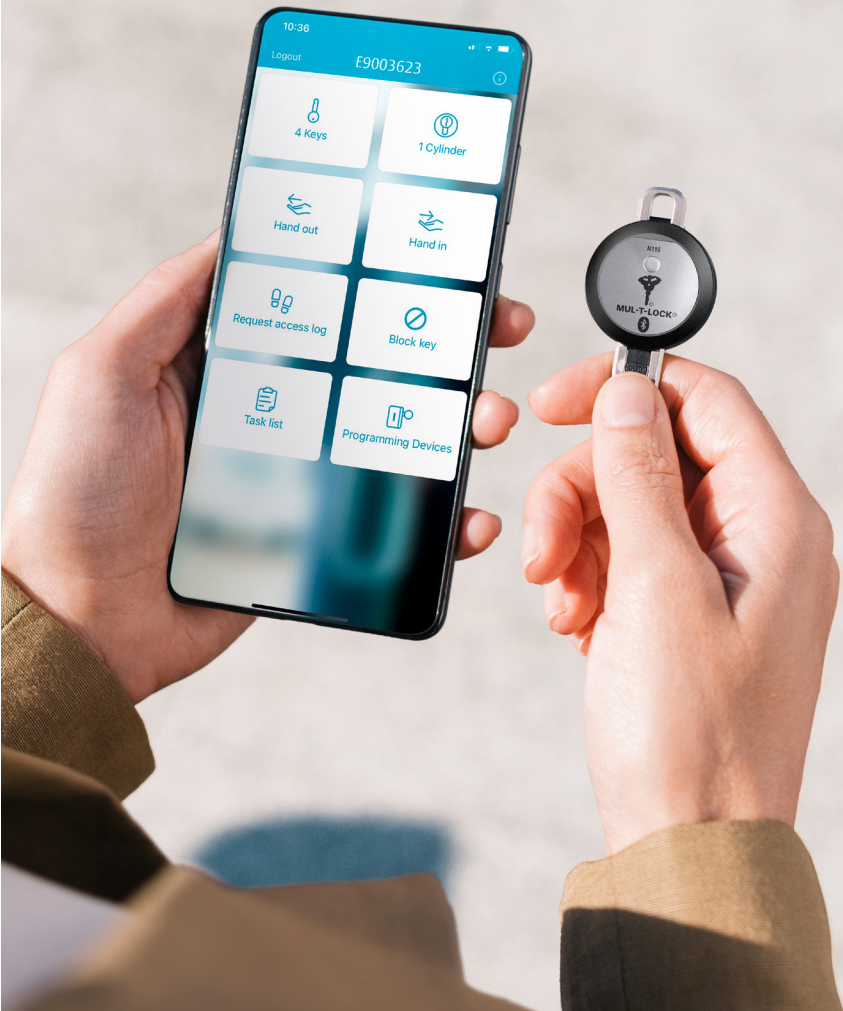




With eCLIQ you can secure and manage all access points digitally, to keep your people and assets safe.

It is convenient, flexible and cost-efficient – bringing peace of mind to everyone.

# How your organization benefits from eCLIQ



## Control your building

- You decide who goes where, and when, by issuing access for each user or cancelling it with a click
- Time-limit access rights and resolve lost key issues quicker



## Upgrade site security

- Quickly eliminate any threat from lost keys, audit cylinder or key use anytime, and set automatic time limits for a user's access rights



## Save money

- No more cylinder changes because of lost keys
- Improved workflows through flexible access management
- CLIQ integrates with existing third-party software (e.g. Genetec, Lenel and Traka), offering system management flexibility



## Protect everywhere

- Cable-free cylinders for every application, to secure doors, gates, cabinets and more
- Users carry one programmable key for all their access points



## Save everyone's time

- No more managing multiple keys and keycards, changing compromised locks or searching for a keyholder
- One key opens all access points for greater user convenience
- No more physical key handovers as access rights can be changed via Bluetooth



## Fit fast and wire-free

- Swap an existing mechanical cylinder for an eCLIQ cylinder with one screw and no drilling



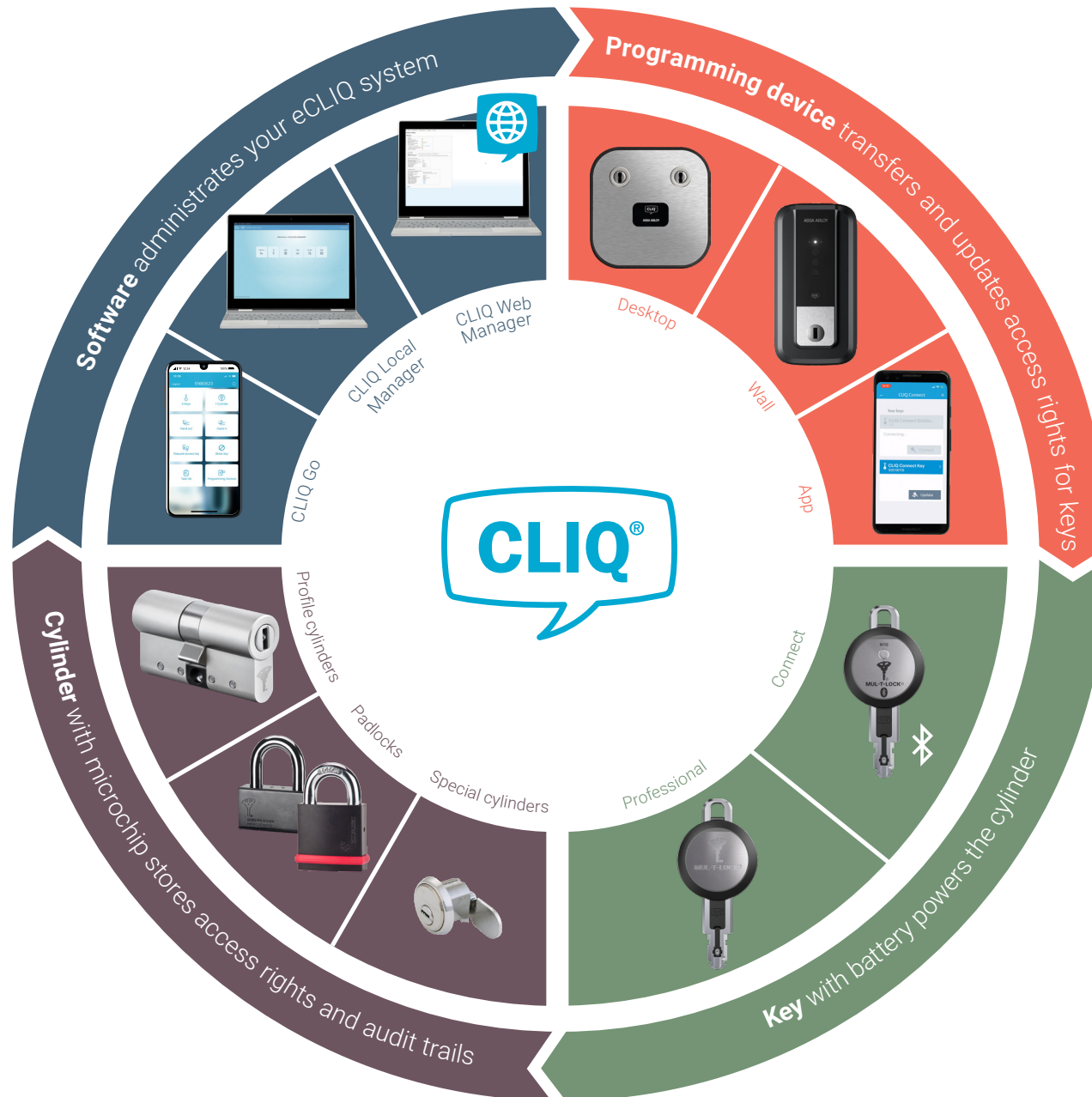
## Be energy-efficient

- Power is supplied via an easy-to-change standard battery with a typical 10-year lifespan\* inside each key

# The 4 elements of your eCLIQ system

## Software

Whether you run a small business with few access points, or your requirement is larger with more people involved, our software solutions make it easy to manage your system



## Cylinders

A wide range of battery-free cylinders and padlocks lock all your access points, such as interior and exterior doors, gates, cabinets, lockers, alarm systems and more

## Programming devices

A range of programming devices enables you to configure the system to meet the needs of different users and applications

## Keys

A range of programmable smart keys ensure each user has a key that suits their workflow – access rights can be updated instantly as requirements change

eCLIQ is intuitive  
to manage

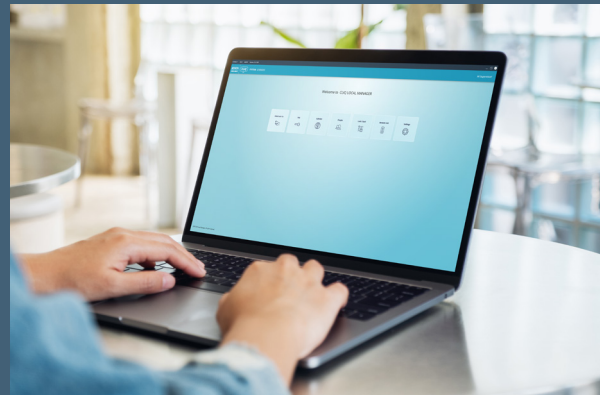




# Software

## Three software options to manage your eCLIQ system

- A choice of software options for managing your eCLIQ system is available for any size of business
- Options include smartphone, hosting onsite and SaaS via the Cloud
- Integrations with third-party software available with CLIQ Web Manager
- Manage schedules for individual users and cylinders, audit trails, update access rights of user keys via the desktop, mobile or wall programming device
- Two-factor authentication enhances user security



Choose the right management software for the job

### Business size

|              |   |   |   |
|--------------|---|---|---|
| Small        | ✓ | ✓ | ✓ |
| Medium       |   | ✓ | ✓ |
| Large/Remote |   |   | ✓ |

### Manage from...

|                |   |   |   |
|----------------|---|---|---|
| PC application | ✓ | ✓ | ✓ |
| Online         |   |   | ✓ |
| Smartphone     | ✓ |   |   |

### Key functions

|                                    |       |       |              |
|------------------------------------|-------|-------|--------------|
| Manage audit trails                | ✓     | ✓     | ✓            |
| Compatible with all eCLIQ keys     | ✓     | ✓     | ✓            |
| Maximum number of cylinders        | < 70  | 3,000 | >300,000     |
| Creation of customized user groups |       | ✓     | ✓            |
| Admin software installation        | Cloud | Local | Local, Cloud |
| Integration with 3rd party systems |       |       | ✓            |

CLIQ Web Manager is integration-ready. You can build your own using our APIs or deploy a pre-existing integration for:

eCLIQ provides  
convenient ways to  
update everyone's  
access



# Programming Devices

Update and activate keys wherever you are

- Acts as the secure data transmitter between CLIQ management software and programming key
- Choice of programming devices available to suit your business needs (desktop, wall or app)
- Anti-vandal rated external wall programming device available (weather ratings IP65 and IK09 vandal-proof)
- Grant and revoke key access rights remotely via wall programming devices or a smartphone



Desktop Programming Device



Wall Programming Device



App

*Choose the right key programmers for the job*

Secure communication between key and programming device



Power supply

USB

12–24V mains or PoE

Optimized for centralized management



Optimized for decentralized management



Compatible with all eCLIQ keys



Safe for use outdoors and protection against dripping water



Bluetooth connectivity





The battery inside an eCLIQ key lasts 10 years on average\* and is easy for anyone to replace – no tools needed

\*excluding Connect key

# Keys

The right key for the job – whatever it is

- Fully electronic with only one key profile
- 2 keys with many variations open all eCLIQ cylinders
- Access rights can be updated remotely using the Connect key and app, saving additional car journeys to collect or update keys
- Power is supplied via an easy-to-change standard battery with a typical 10-year lifespan\* inside each key
- Withstands any weather conditions and extreme environments (water- and dust-proof to IP67, ATEX standard)
- Battery covers with RFID chips available for all keys

\*excluding Connect key



Professional

Connect

Choose the right key for the job

|   |   |         |
|---|---|---------|
| 10-year battery life (approximately 100,000 operations)     | ✓ | 2 years |
| Dust- and weather-proof (IP67)                              | ✓ | ✓       |
| Convenient LED feedback                                     | ✓ | ✓       |
| Additional sound feedback                                   | ✓ | ✓       |
| Update access rights by desktop, wall or a mobile           | ✓ | ✓       |
| Update access rights via app/Bluetooth                      |   | ✓       |
| Unlock doors, cabinets, elevators, machines, gates and more | ✓ | ✓       |

The keys come with different features, such as access authorization, time/schedules/revalidation, audit trails or directly programmable, depending on the type of key.



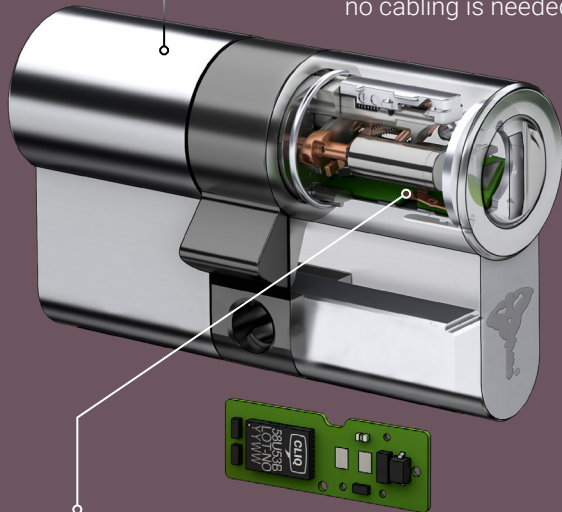
Fitting an eCLIQ cylinder is quick and easy – no wires makes it the ideal choice for retrofitting

# Cylinders

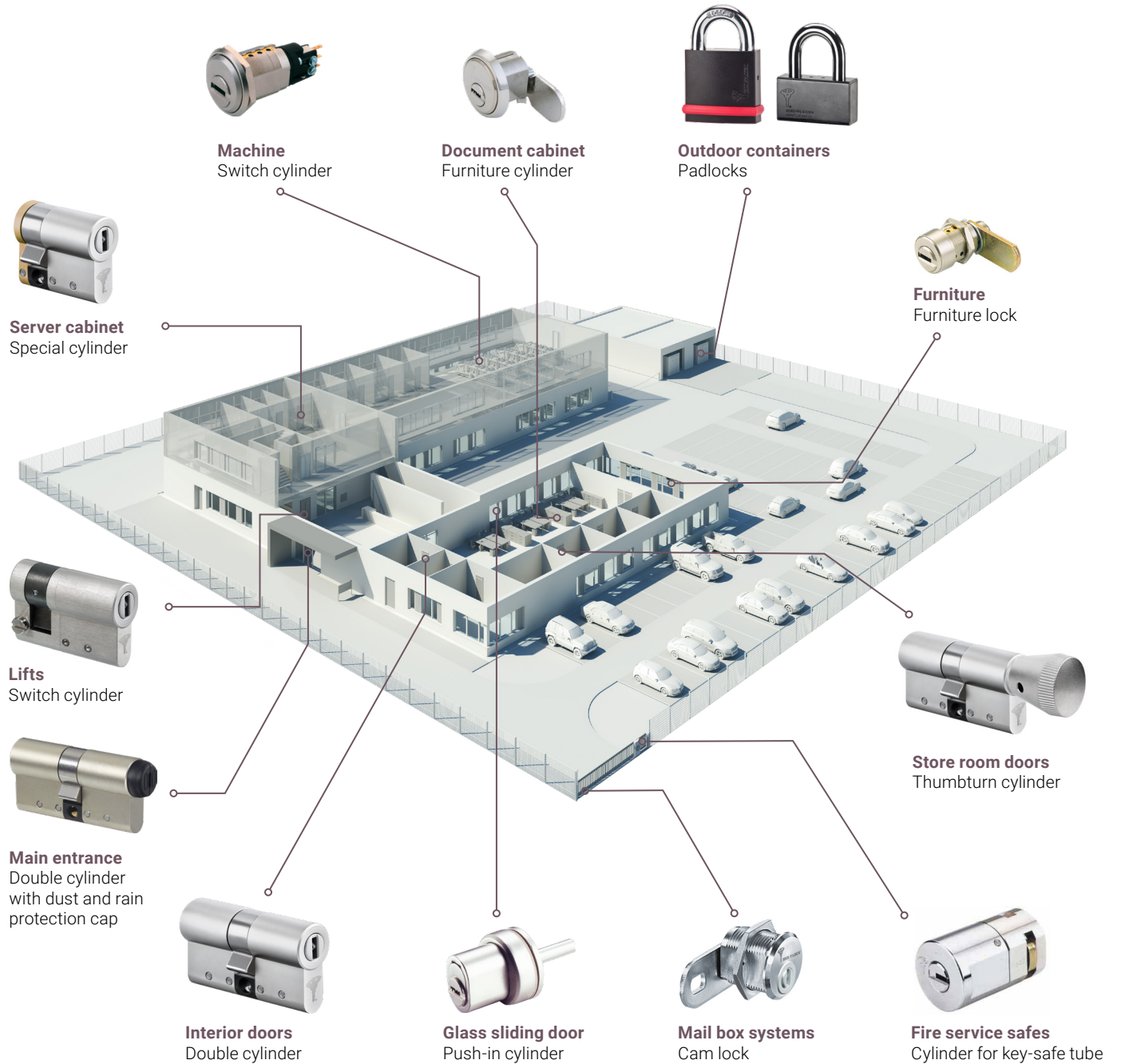
Secure, reliable...  
and beyond doors

- Fully electronic cylinders – also available in shorter lengths
- More than 60 eCLIQ cylinder types, including padlocks and cam locks
- Simply swap an existing mechanical cylinder for an eCLIQ cylinder with just one screw change
- No drilling and no wires makes them the ideal choice for retrofit or installation in historic buildings
- Maintenance-free for up to 200,000 cycles due to an innovative integrated lubricant depot inside each cylinder

Cylinders are easy and quick to install, no cabling is needed



New future-proof eCLIQ chip generation with AES encryption and rapid processing speed with efficient energy management



# These customers – and many more around the world – rely on eCLIQ



Office & Enterprise

**World Trade Center Amsterdam** needed to electronically secure more than 1,000 doors and opted for the wire-free, easy-to-install eCLIQ system



Multi-residential

**GWW Wiesbadener Wohnungsbaugesellschaft** in Germany was looking for an easy-to-install, digital solution to secure the entrances, communal and technical doors of all its residential buildings and found it in eCLIQ



Industry & Utilities

Electricity supplier **K&F Drack** in Almtal, Austria chose eCLIQ for its flexibility in installation and use, as well as for its low maintenance requirements



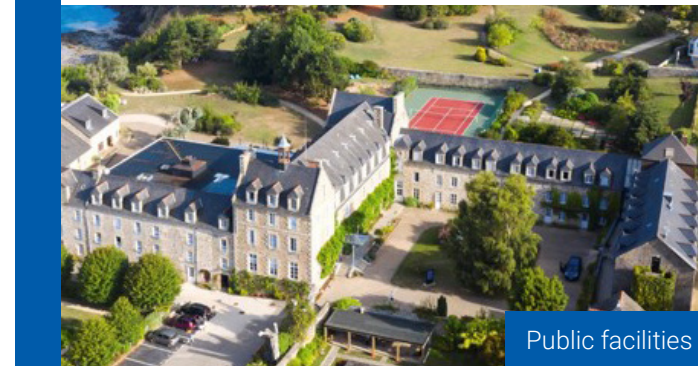
Entertainment & Culture

**Humboldt Forum Museum** in Berlin, Germany needed a flexible solution to support differing room usage. eCLIQ offered a very high standard of security and simple access authorisation management



Healthcare

Installing eCLIQ on the **NHS Raigmore Hospital** site in the UK meant that facility managers had a detailed overview of who was accessing rooms, which is essential for hospital security



Public facilities

The commune **Saint-Jacut-de-la-Mer** in France faced growing security management difficulties for their municipal buildings, so unified and simplified access with eCLIQ



Life is easier when  
you just CLIQ



# Get in touch



If you would like more advice on eCLIQ, one of our experts in your area can get in touch.

They can help you understand:

- How a key-based access control system can help keep your building and colleagues safe
- The benefits and simplicity of changing your current locking system to eCLIQ

## About Mul-T-Lock®

Mul-T-Lock® is a worldwide leader in developing, manufacturing, and marketing high-security locking products and access control solutions for institutional, commercial, industrial, and residential applications.

Mul-T-Lock® is fully owned by the ASSA ABLOY Group, a global leader in access solutions with a proven track record in helping billions of people experience a more open world through innovations that enable safe, secure, and convenient access to physical and digital places. Adherence to the world's most stringent standards.

Mul-T-Lock® products are sold via 20,000 authorized service centers, supporting over 300 million customers worldwide.



[www.mul-t-lock.com](http://www.mul-t-lock.com)

The Mul-T-Lock name, the muscleman logo, in the field of locking products, MVP and the MTL names and/or any other trademark, marked by a ™ or ® sign, are registered / pending or otherwise owned trademarks of Mul-T-Lock Ltd. and/or its affiliates 2025. 89101389A

Part of ASSA ABLOY