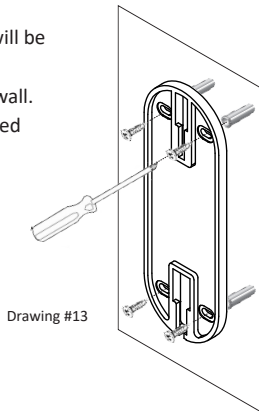


## 4. Touchpad Reader

### 4.1 Mounting the Touchpad Reader

Select the location where the Touchpad Reader will be mounted.

- Attach the Touchpad Reader baseplate to the wall.
- Use 4 screws and screw anchors, or double sided adhesive strip (drawing #13).



Drawing #13

### 4.2 Battery Replacement

1. Release lid screw and open the lid.
2. Insert new batteries (2xAA) according to the "+" "-" signs (drawing #14).
3. Close the lid and tighten the screw.
4. Touch [#] for 5 seconds.

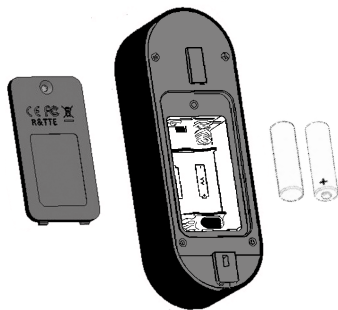
#### Notes:

- A short beep sound emitted and a green **[OK]** indication is illuminated for 2 seconds.

**Important:** Do not touch the Touchpad during the self-test procedure and until the indication lights are off.

#### 4.2.1 Low-battery Indication

When batteries need recharging, a red warning signal will blink rapidly and long beep will sound during every lock/unlock action.



Drawing #14

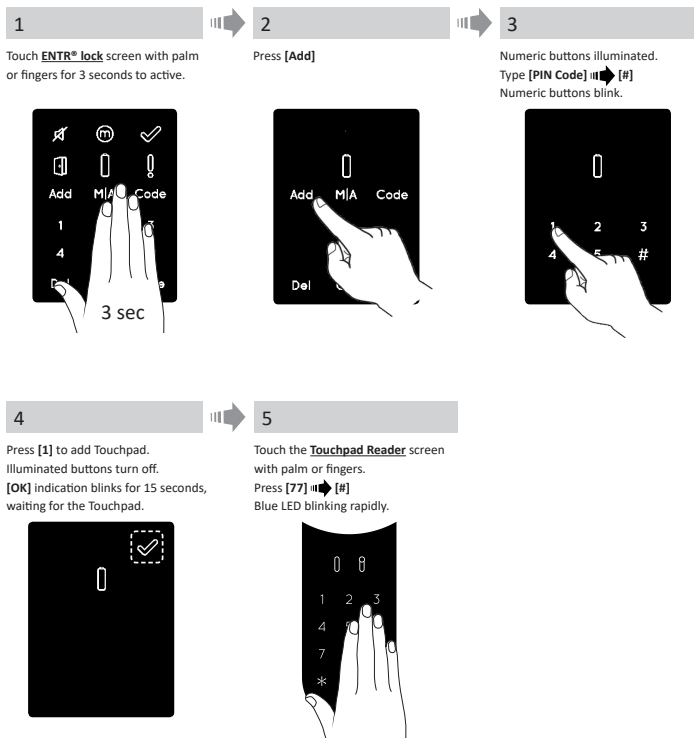
## 5. Touchpad Reader Operation

### 5.1 Operation

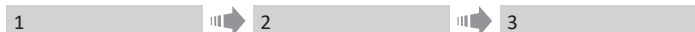
To turn the Touchpad Reader ON press [#] for 5 seconds. The reader will perform a self-test, followed by series of beeps. LED blinks green, red, and Blue.

### 5.2 Pairing Touchpad Reader

This procedure is done via the ENTR® lock. See also: Pairing Remote Control.



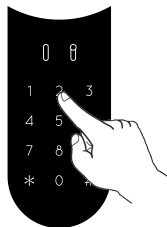
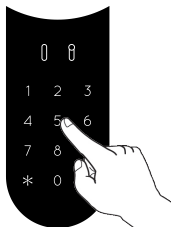
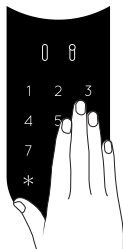
## 5.3 Touchpad Reader Master PIN Code



1  
Touch screen with palm or fingers.  
Press [11] → [#]

2  
Enter [New Master PIN Code]  
(4-10 digits) → [#],  
For example: 1231234#

3  
Reenter:  
[New Master PIN Code] → [#]



### Master PIN Code added

Green [OK] illuminated for 1 second,  
2 short beeps emitted.

### Master PIN Code not added

Red [Error] illuminated for 1 second,  
1 long beep emitted.

## 5.4 Menu Mode

Entering menu mode by: Pressing [\*] → [Master PIN Code] → [#]

## 5.5 Adding PIN Code (up to 20 different codes)



1  
Touch Touchpad Reader screen with  
palm or fingers.  
Press [\*] → [Master PIN Code]  
→ [#]  
Press [11] → [#]

2  
Enter [Personal PIN Code]  
(4-10 digits) → [#]  
For example: 1231234#

3  
Retype:  
[Personal PIN Code] → [#]

### PIN Code added

Green [OK] illuminated for 1 second,  
2 short beeps emitted.

### PIN Code not added

Red [Error] illuminated for 1 second,  
1 long beep emitted.

## 5.6 Open Door

1

Touch Touchpad Reader screen with palm or fingers.



2

Press **[Personal PIN Code]**  **[#]**

**Not opening**

Red **[Error]** illuminated for 1 second, 1 long beep emitted.

## 5.7 Lock Door

1

Touch Touchpad Reader screen with palm or fingers.



2

Press **[1]**  **[#]**

**Not locking**


Red **[Error]** illuminated for 1 second, 1 long beep emitted.

## 5.8 Delete PIN Code

1

Touch Touchpad Reader screen with palm or fingers.

Press **[\*]**  **[Master PIN Code]**  **[#]**

Press **[33]**  **[#]**



2

To delete enter:  
**[Personal PIN Code]**  **[#]**

**PIN Code deleted**

Green **[OK]** illuminated for 1 second, 2 short beeps emitted.

**PIN Code not deleted**


Red **[Error]** illuminated for 1 second, 1 long beep emitted.

## 5.9 Delete all PIN Codes

1

Touch Touchpad Reader screen with palm or fingers.

Press **[\*]**  **[Master PIN Code]**  **[#]**

Press **[22]**  **[#]**



2

Enter **[Master PIN Code]**  **[#]**  
Reenter: **[Master PIN Code]**  **[#]**

**All PIN Codes deleted**

Green **[OK]** illuminated for 1 second, 2 short beeps emitted.

**Note:** Master PIN Code can not be deleted.

**All PIN Codes not deleted**

Red **[Error]** illuminated for 1 second, 1 long beep emitted.

## 5.10 Volume Control

1

Touch Touchpad Reader screen with palm or fingers.

Press [\*] → [Master PIN Code] → [#]

Press [55] → [#]



2

Press [2] to increase the volume, or [8] to decrease the volume.

Press [#] to confirm volume level.

## 5.11 Factory Reset

The reset action will delete all PIN codes (master and personal) and will cut off the Touchpad Reader from the ENTR® lock.

1

Touch Touchpad Reader's screen with palm or fingers.

Press [\*] → [Master PIN Code] → [#]

Press [99] → [#]



2

Enter [Master PIN Code] → [#]

### Personal and Master PIN Codes deleted

Green [OK] illuminated for 1 second, 2 short beeps emitted.  
Device performs self test & reverts to factory reset.

### Personal and Master PIN Codes not deleted

Red [Error] illuminated for 1 second, 1 long beep emitted.