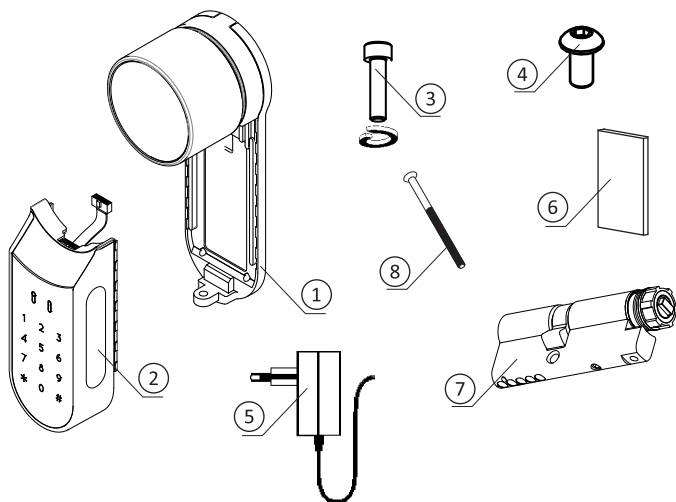


# 1. Cylinder Installation

## 1.1 Package Content



1 Base plate & Knob

2 Electrical unit

3 Mounting screw

4 Panel screw

5 Battery charger

6 Magnet

**In a plastic bag:**

7 Cylinder + key & duplication card

8 M5 Mounting screw

## 1.2 Tools Requirements

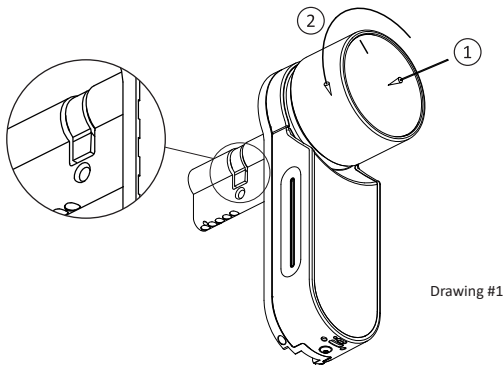
- Small Phillips screwdriver
- Allen key #3

**Note:** Do not use power tools or any excessive force to assemble ENTR® parts.

### 1.3 Prior to Installation

**Warning:** Do not attempt to operate the unit until assembled on the door.

- Press & hold the knob (1) and turn slightly (2) until the cylinder cam is no longer protruding from the side of the cylinder body (drawing #1).



Drawing #1

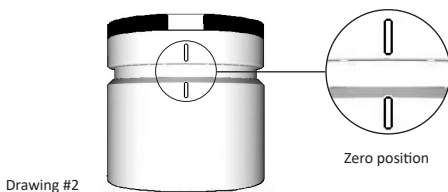
### 1.4 Cylinder & Unit Installation

- Insert the cylinder (including baseplate & knob) from the interior side of the door.
- Once the cylinder is correctly aligned within the door, secure the cylinder in place using the M5 screw.
- Do not over tighten the screw or use power tools to do so.

**Note:** Do not hammer (or use any other excessive force) on the cylinder or knob when inserting them into the door.

- Turn the knob back to the zero position. Knob marks point upwards (drawing #2).

**Note:** The knob will jump out when returned to zero position.

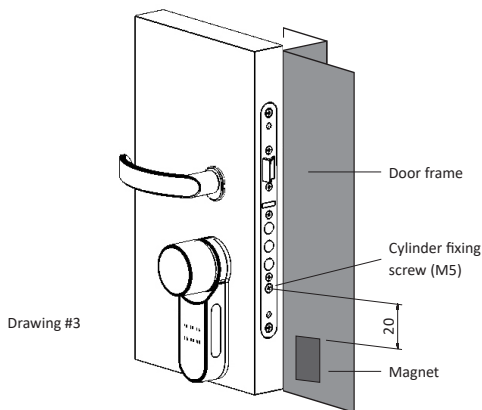


Drawing #2

## 1.5 Magnet Fitting

- Mount the magnet on the front panel of the door frame, as close as possible to the lock.
- The top point of the magnet should be approximately 20mm below the M5 screw (drawing #3).
- Use the supplied double-sided sticker to adhere magnet.

**Note:** The magnet area on door frame should be clean and free from dust, peeling paint etc.

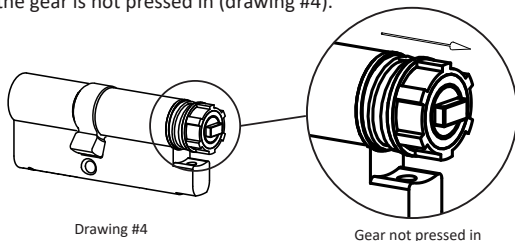


## 1.6 Cylinder to Unit Assembly (optional)

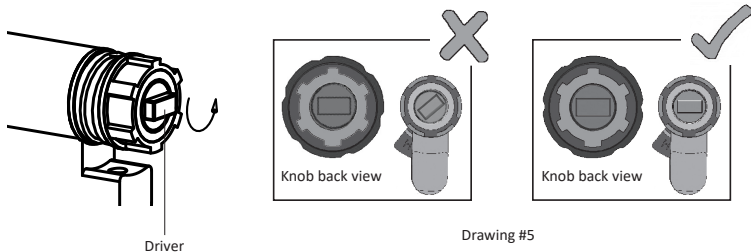
**Note:** Follow the instructions only if the cylinder was dismantled from the door unit.

- Insert the operating key into the external side of the cylinder and turn one full turn.
- Take the key out.

**Note:** Verify that the gear is not pressed in (drawing #4).

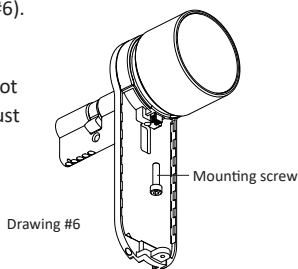


- Verify the knob is in zero position. Knob marks point upwards (see page 6).
- Verify that the rectangle driver (cylinder) is aligned with the knob's rectangle bore. If required, turn the rectangle driver (cylinder) until it is in the same direction (drawing #5).



- Assemble the cylinder into the door unit (baseplate & knob).
- Tighten the cylinder's mounting screw (drawing #6).

**Note:** Verify that the cylinder and the knob are engaged. Press the knob and turn. If the knob can not be pressed or turned, disassemble the cylinder, adjust the cylinder's projecting rectangle and reassemble.



- Connect carefully the data cable plug.
- Assemble electrical unit (drawing #7).
- Tighten the electrical unit's panel screw.

