



Installation manual

# MVP™ 1000

Ref: 51315207



 **MUL-T-LOCK®**

Ref: 51315207



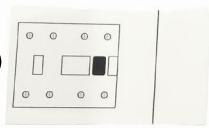
②



④' x8+1



①'



⑤'



⑥'



③'



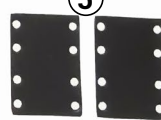
②



④' x8+1



⑤

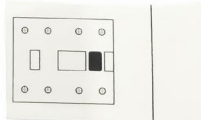


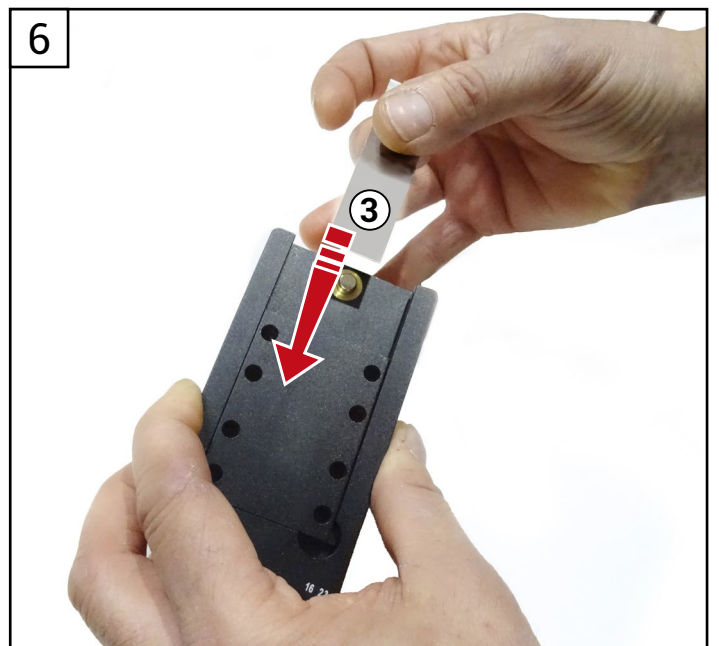
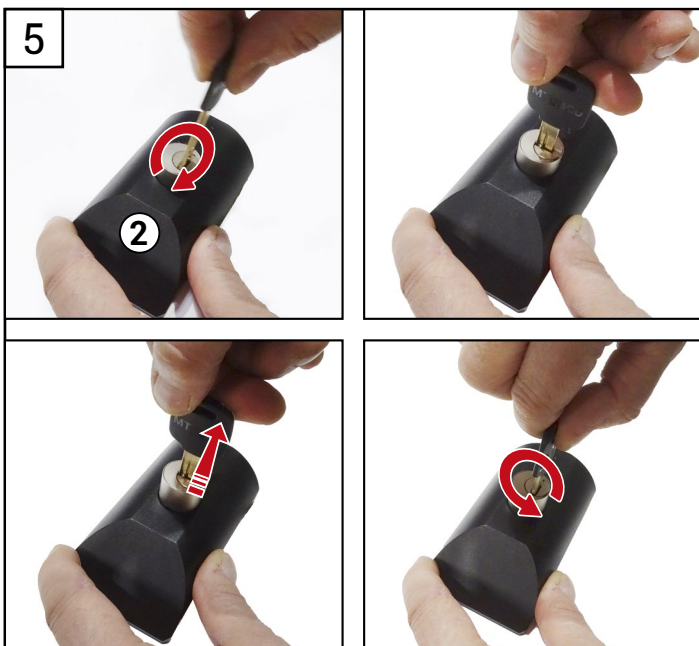
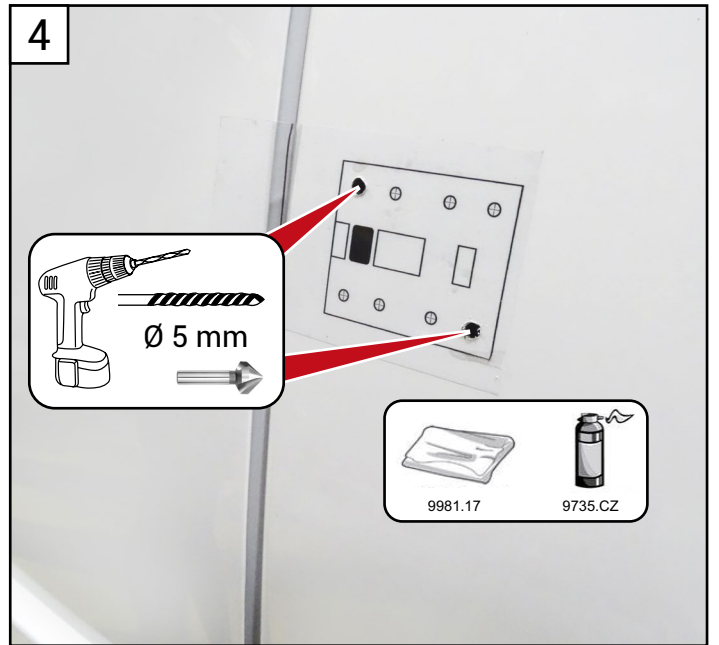
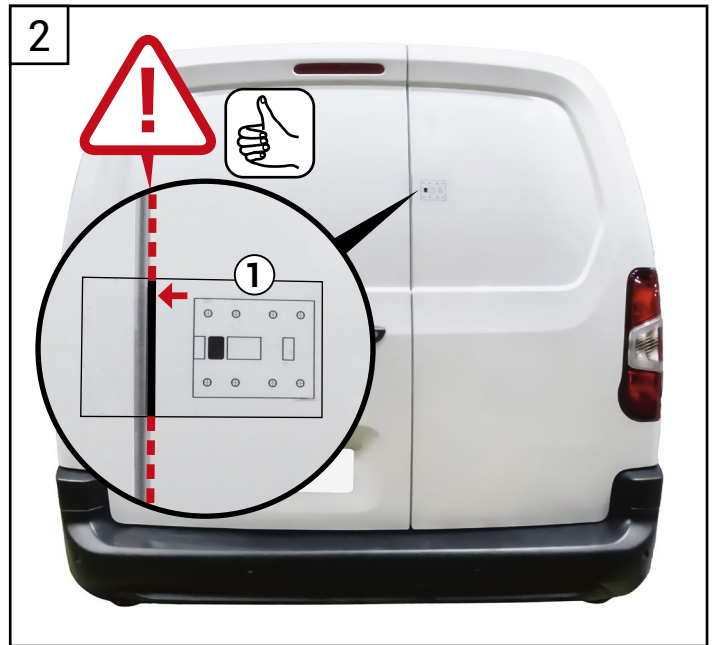
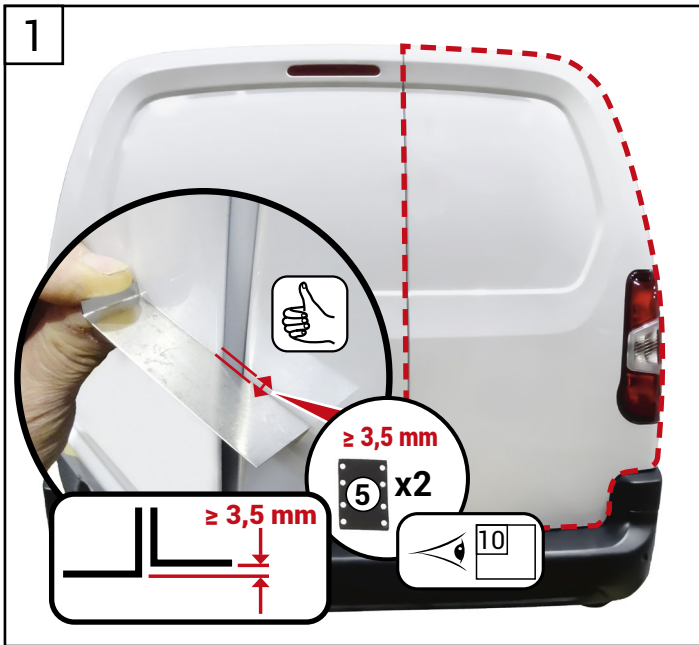
⑥



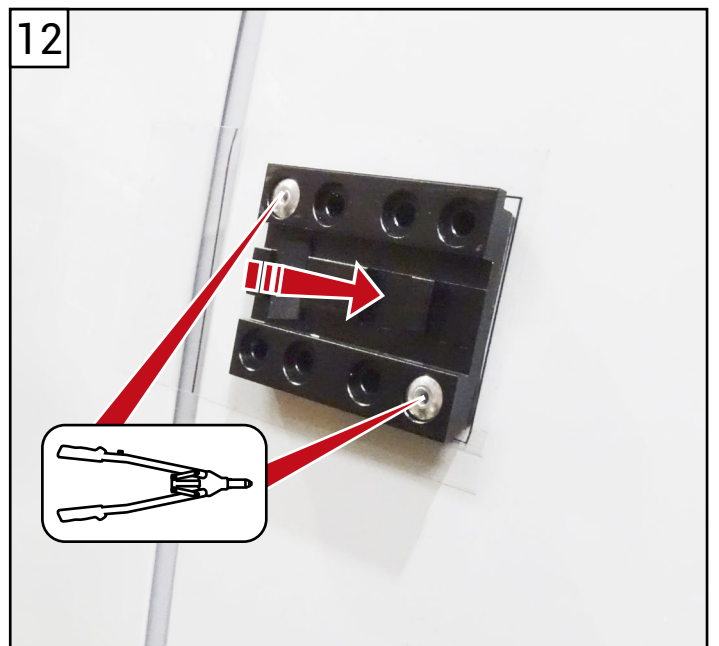
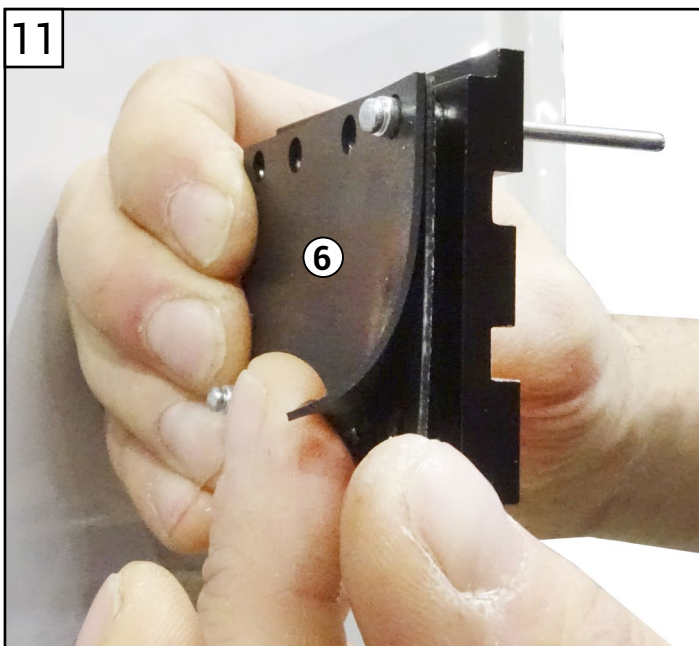
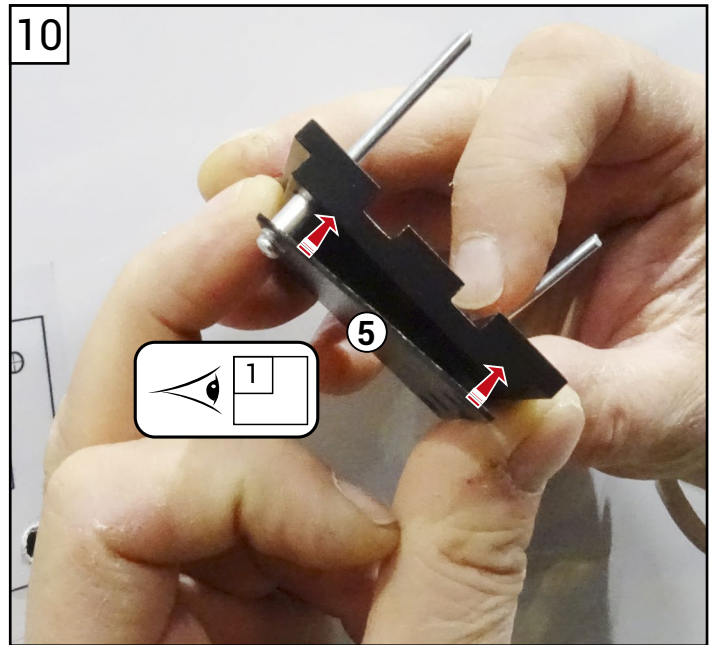
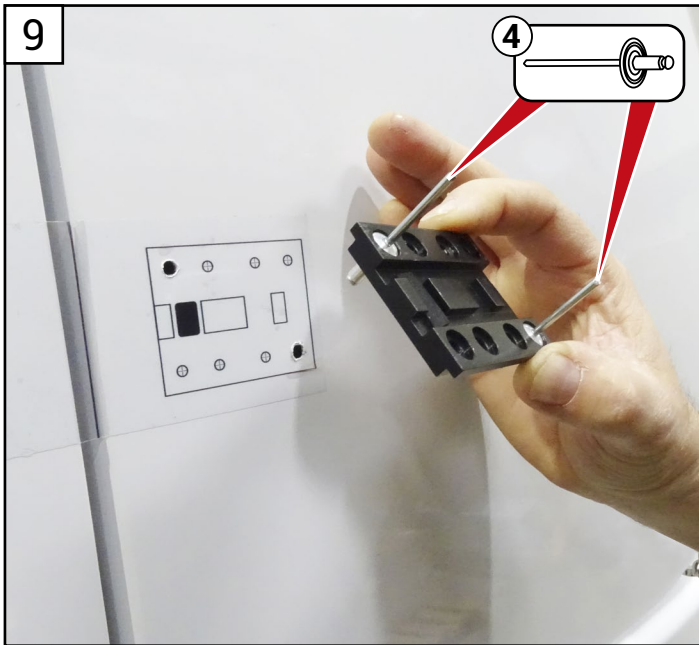
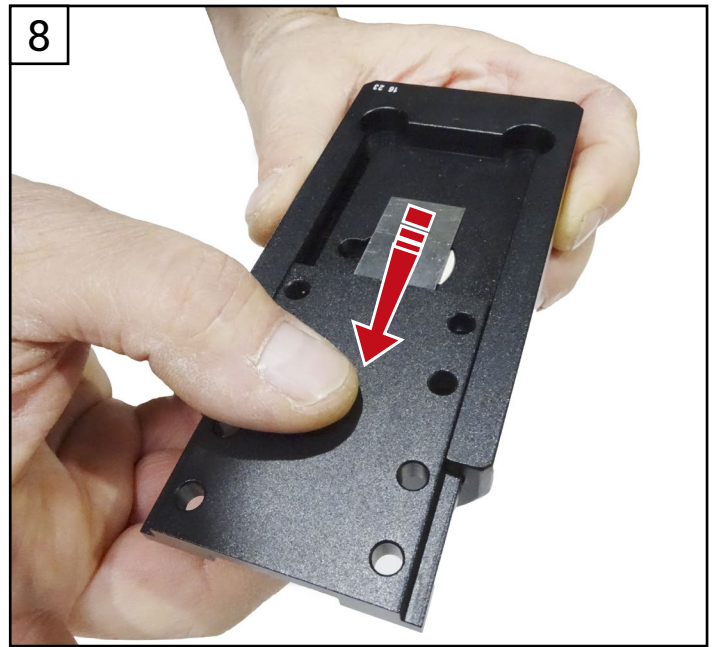
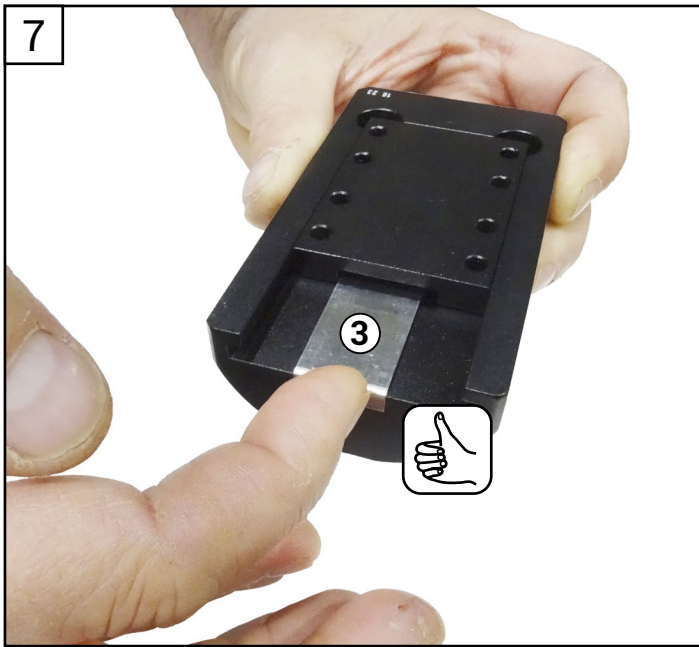
③

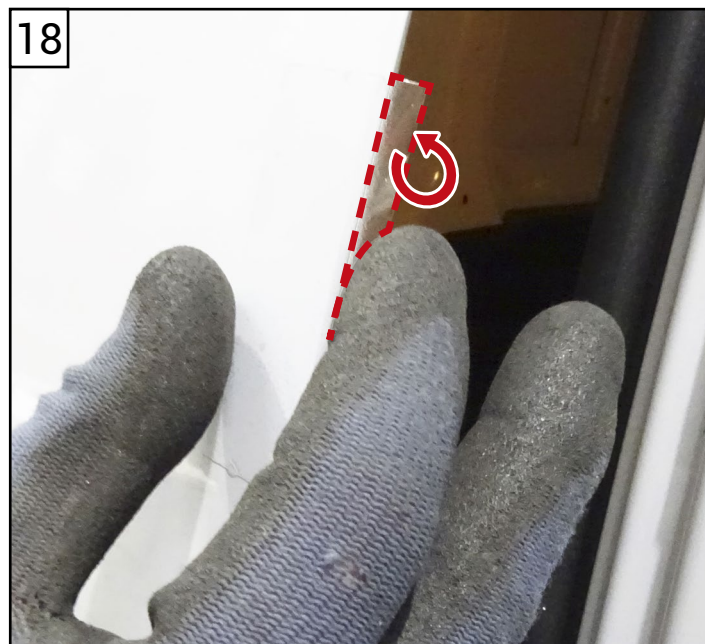
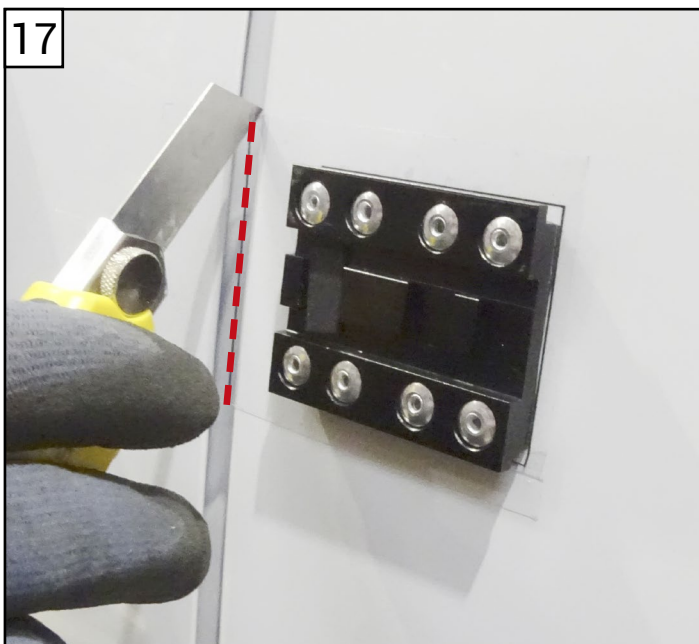
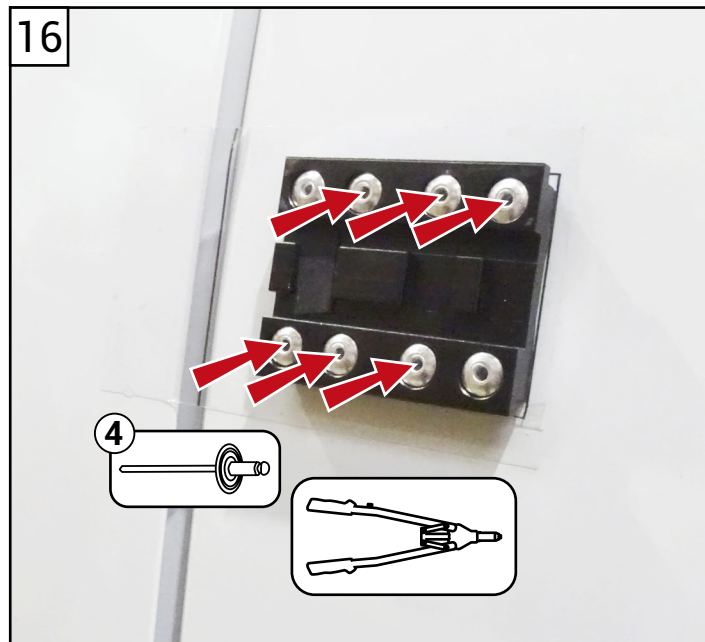
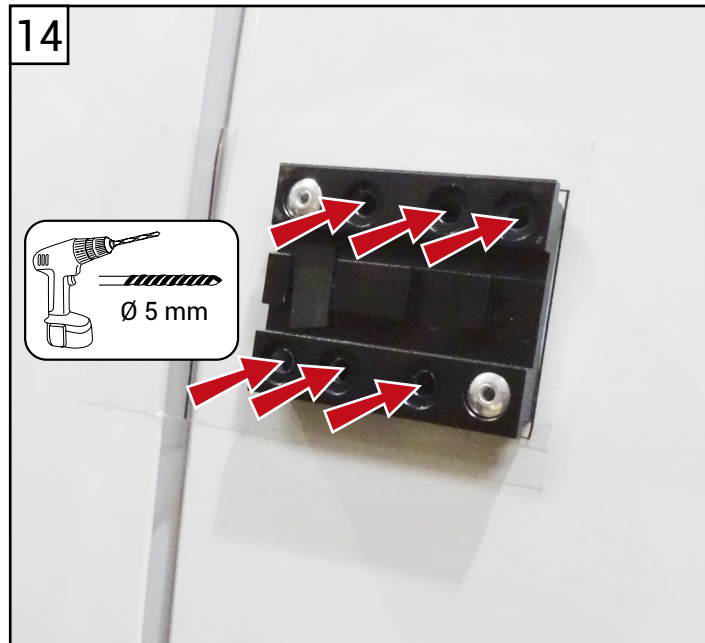
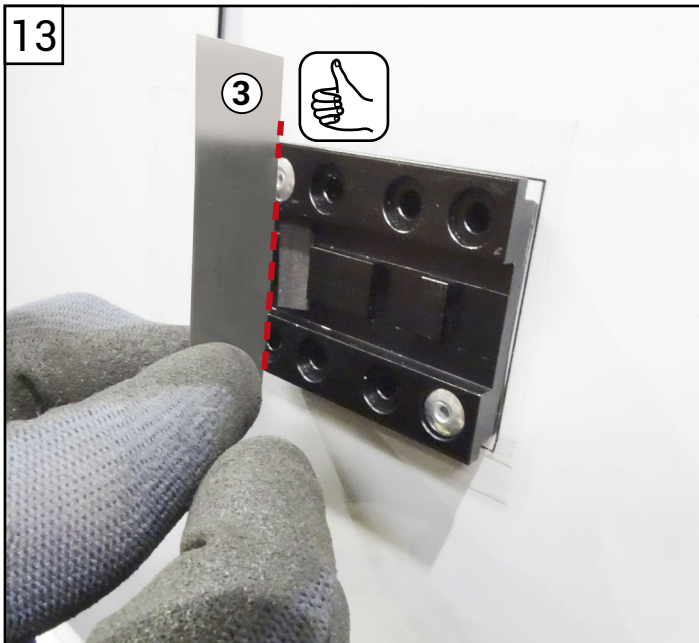
①



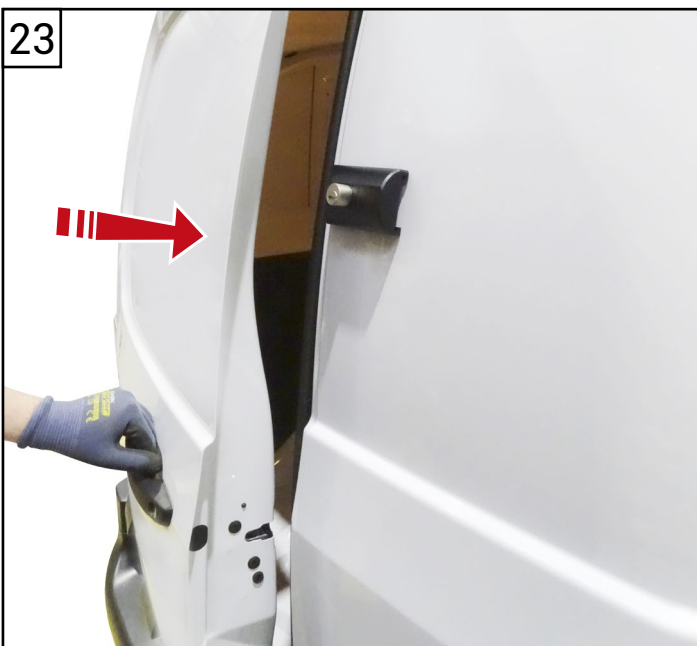
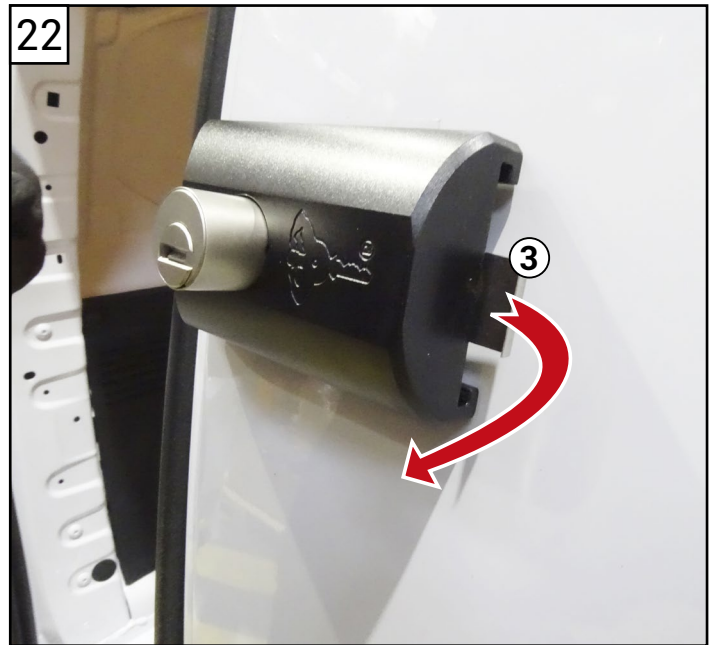
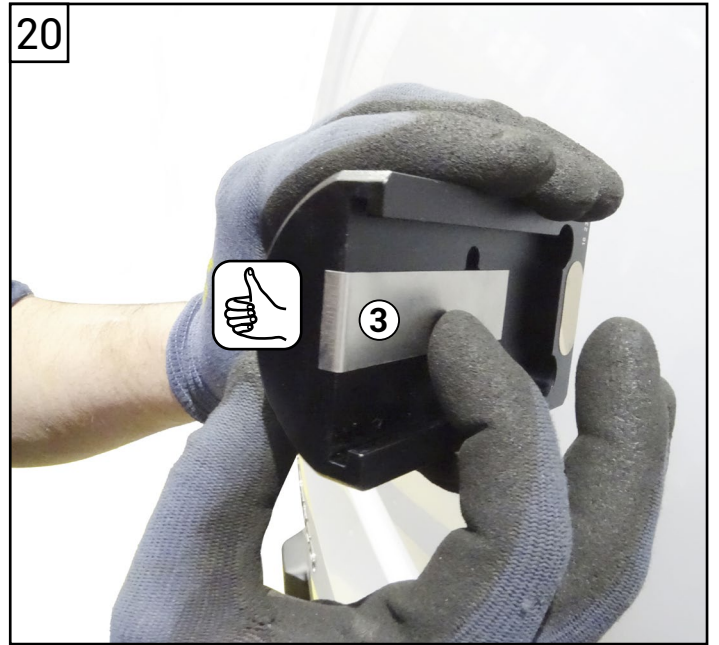
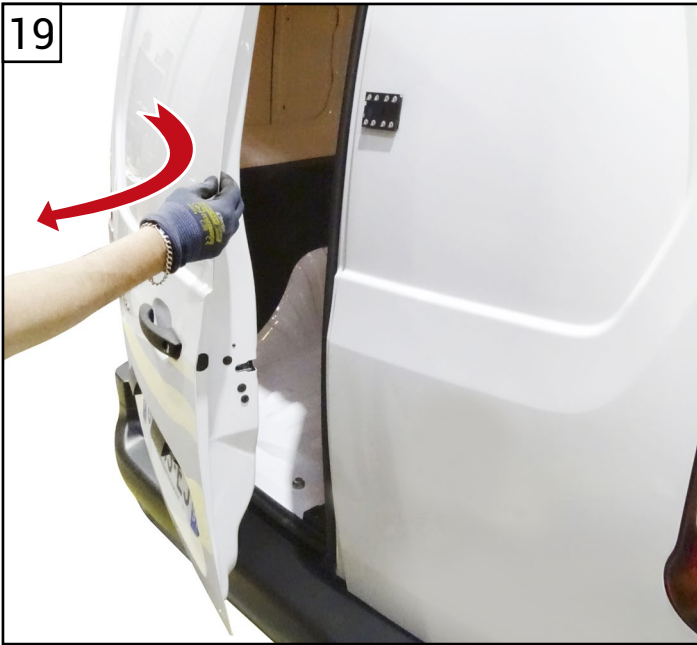


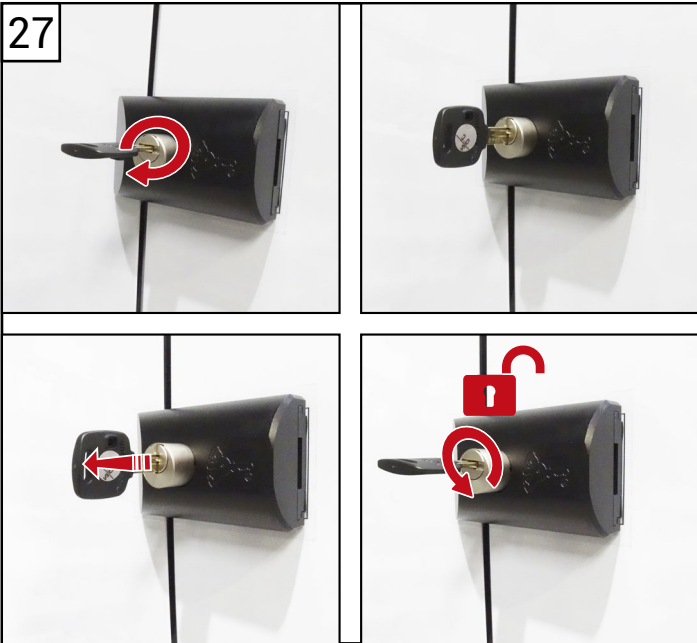


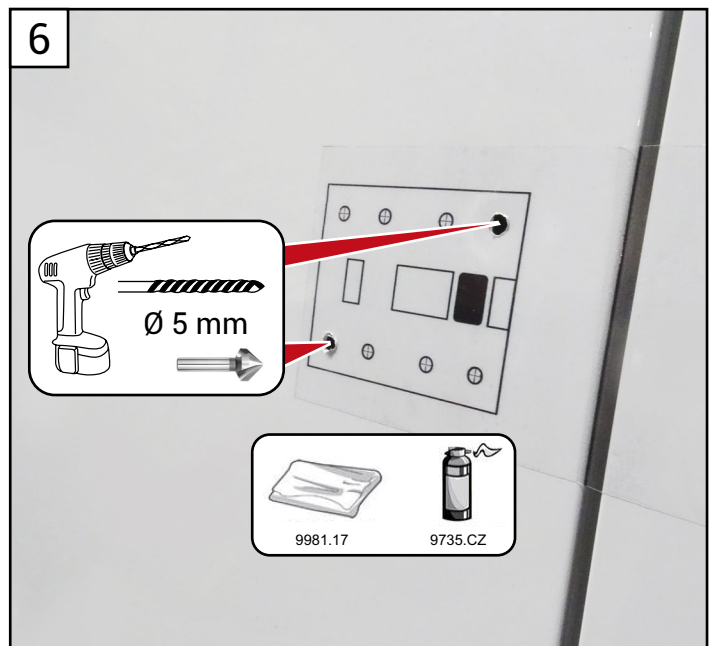
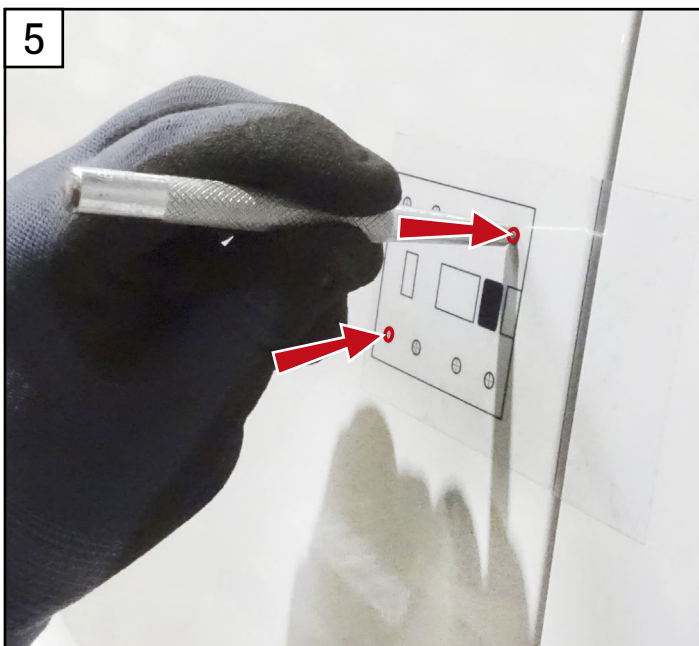
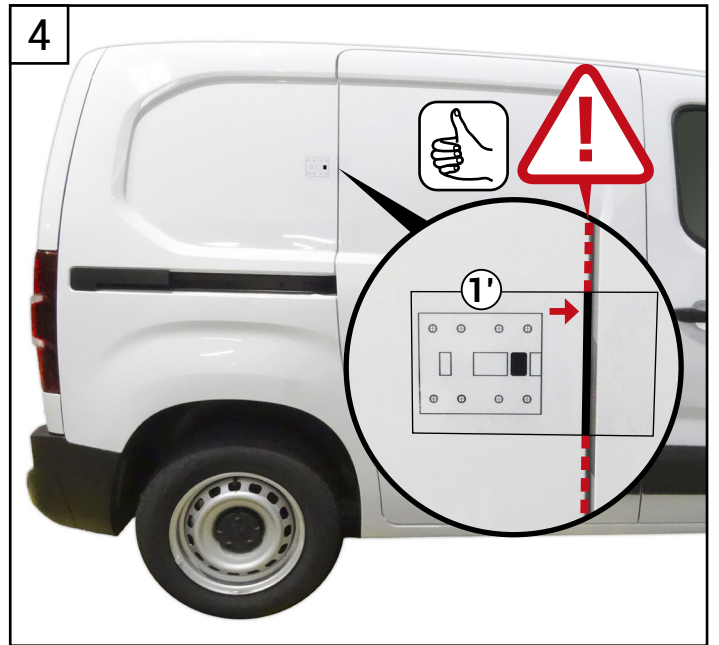
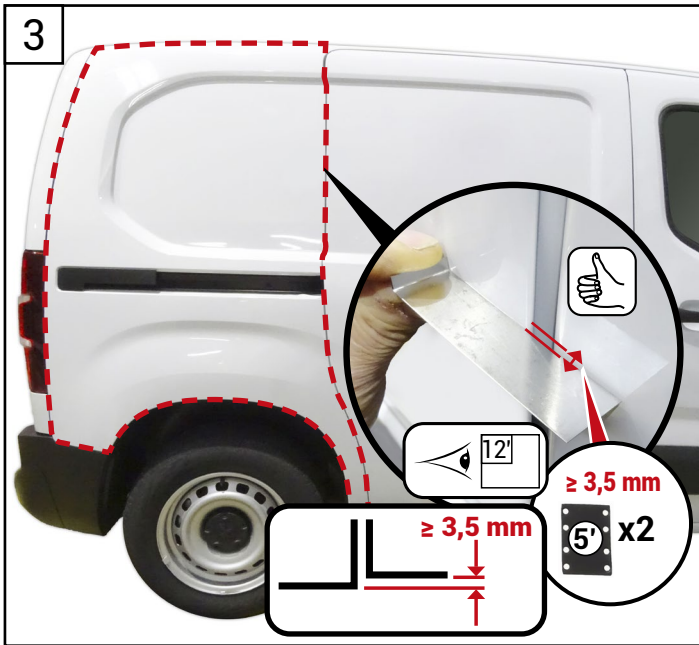
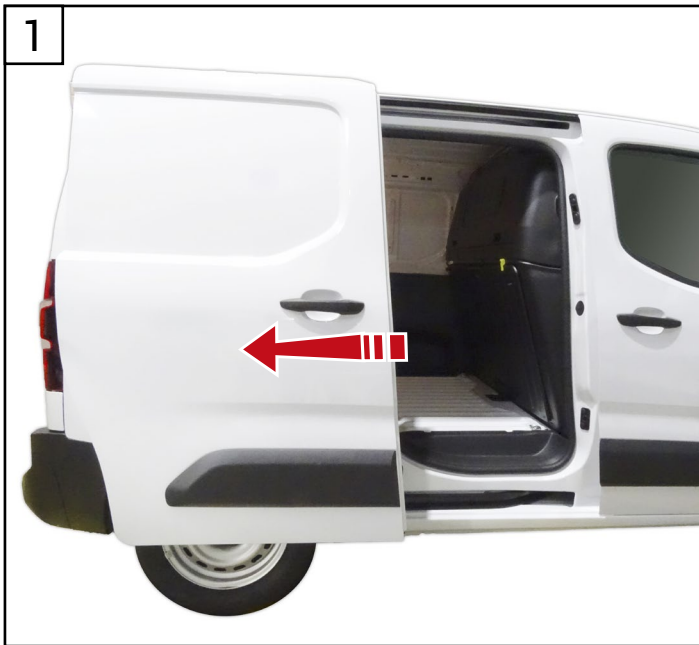




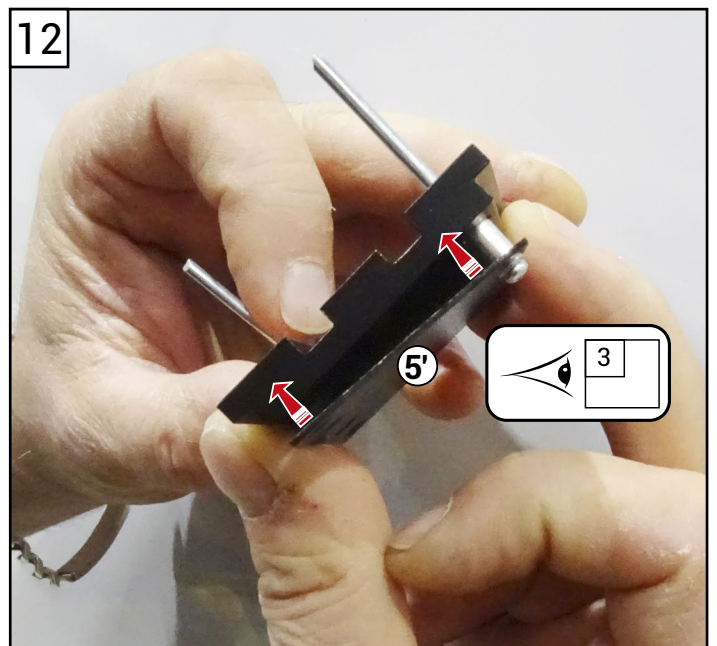
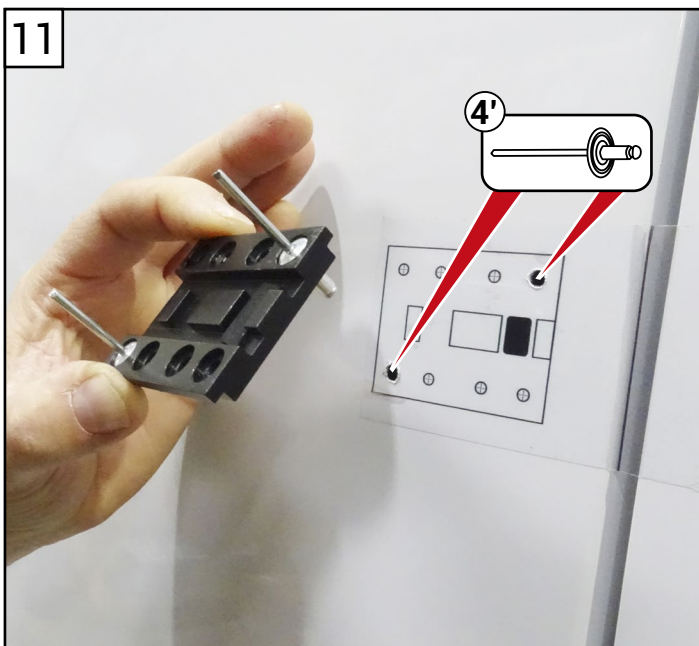
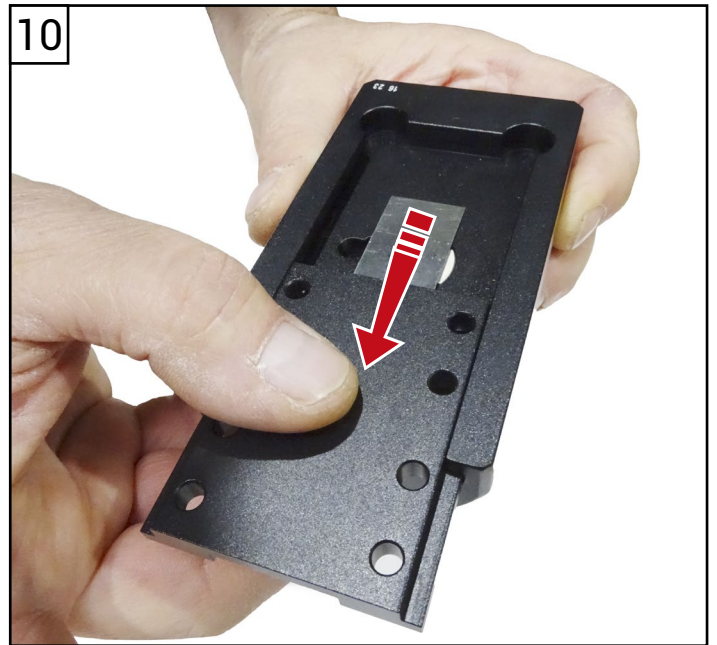
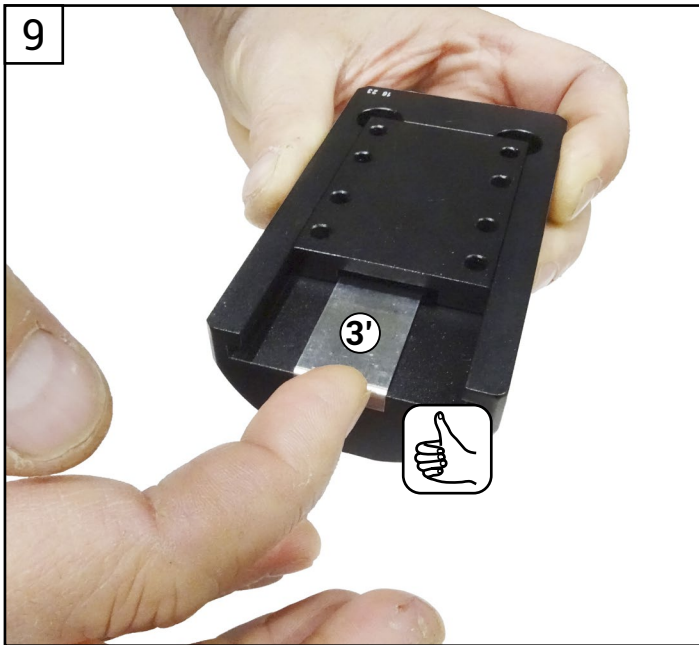
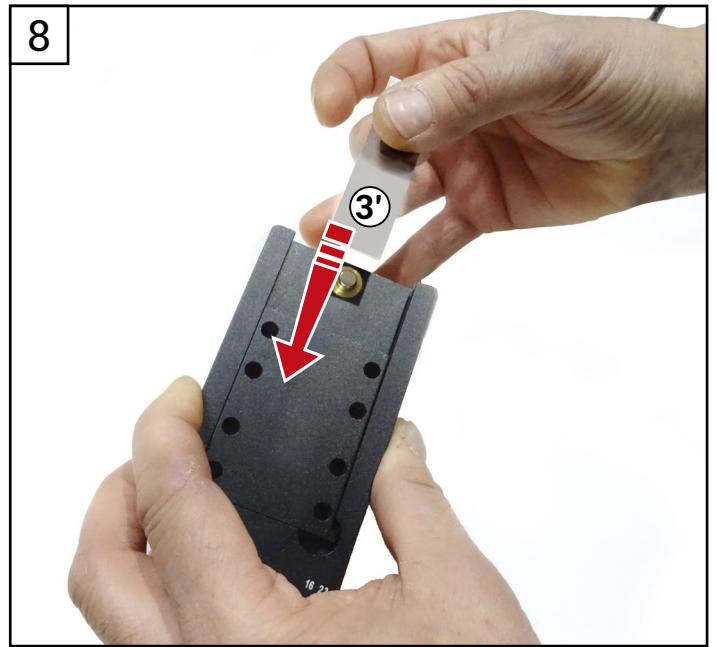
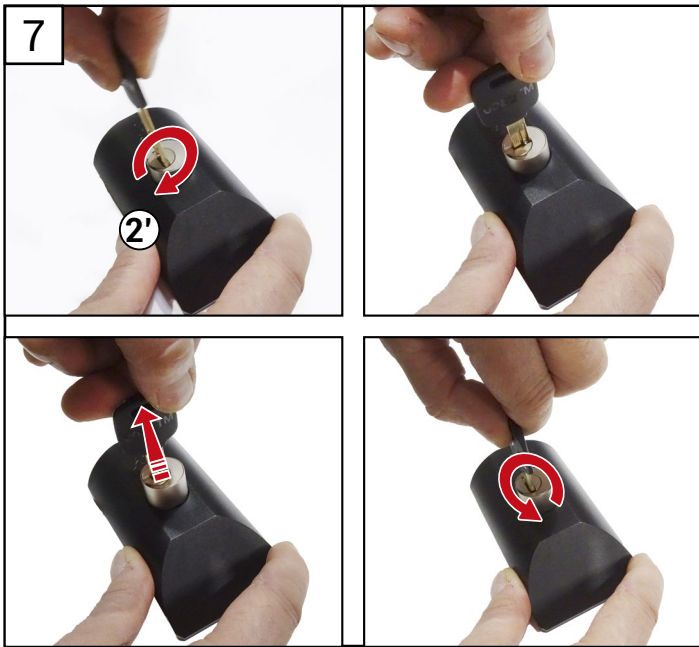


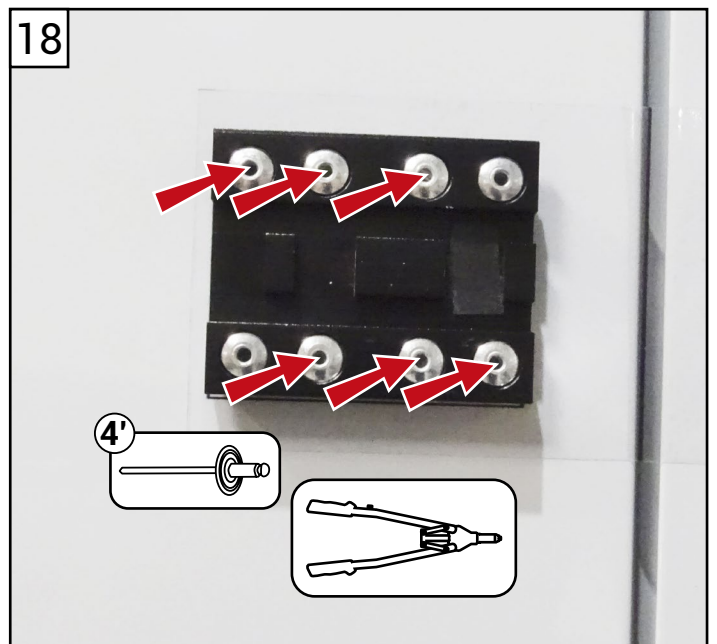
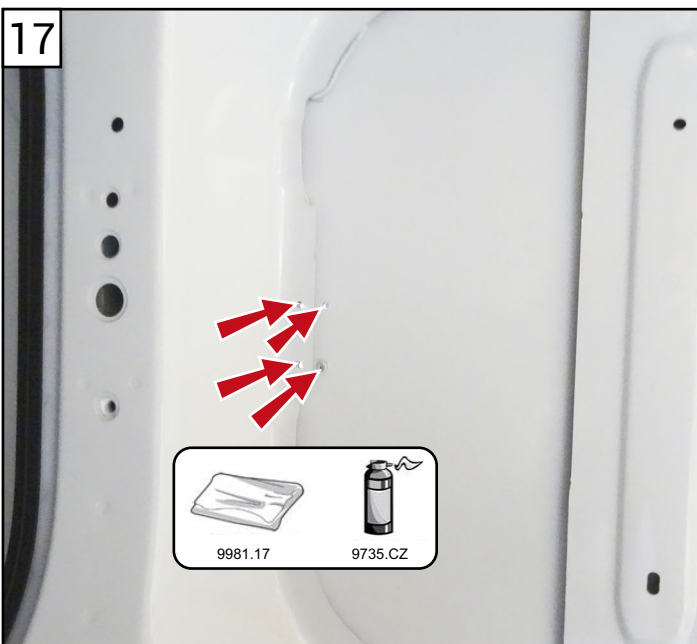
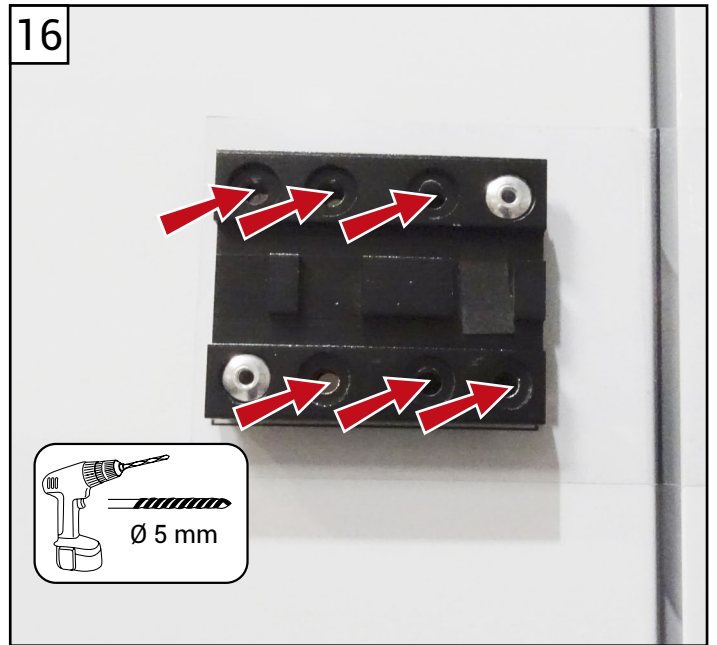
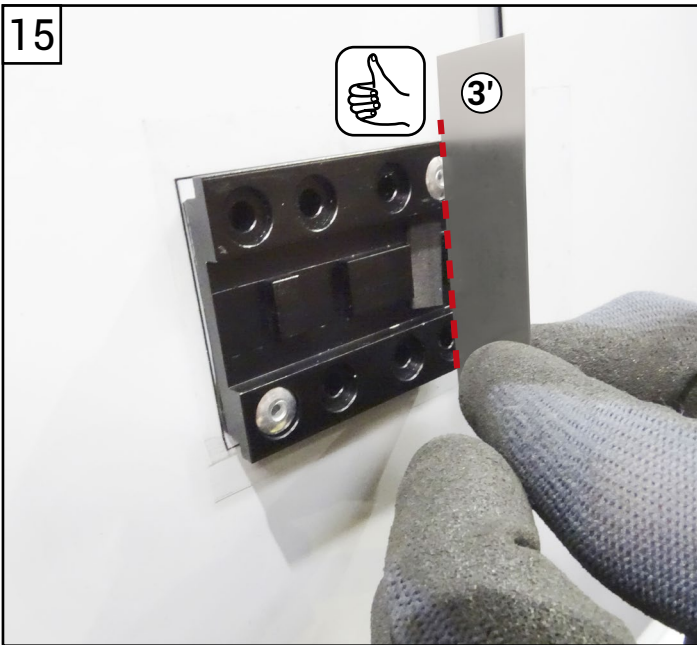
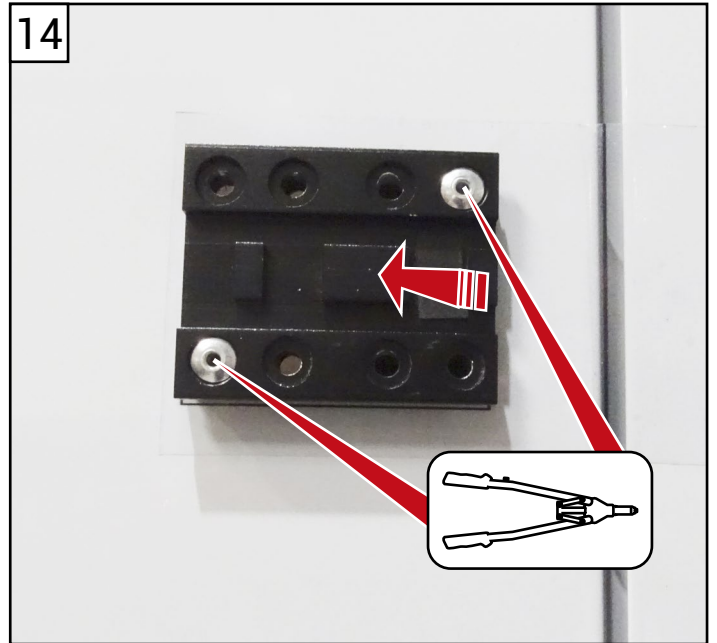
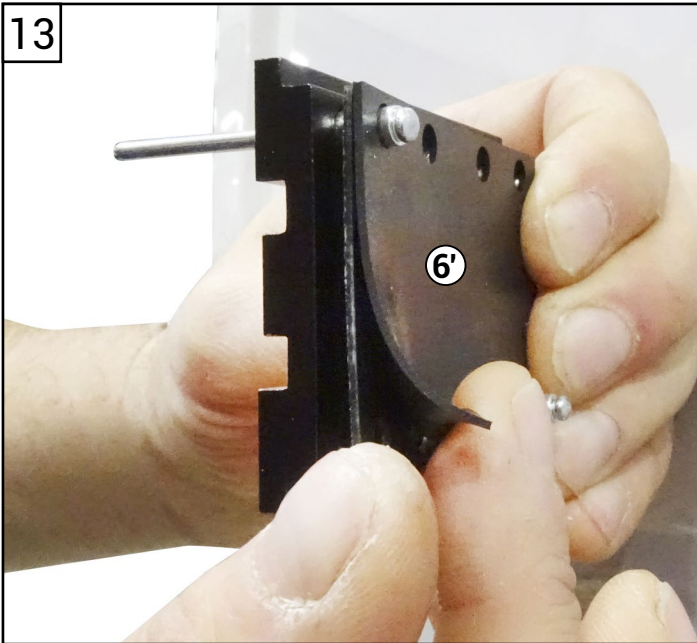




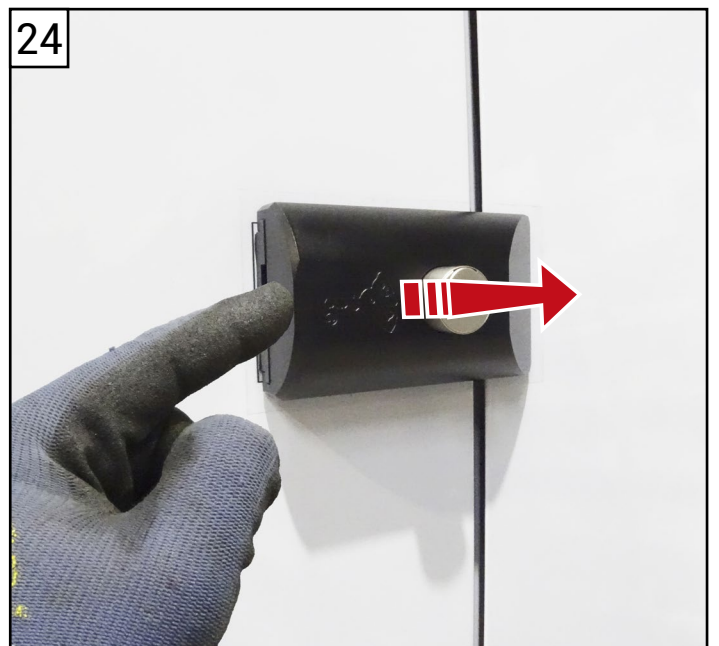
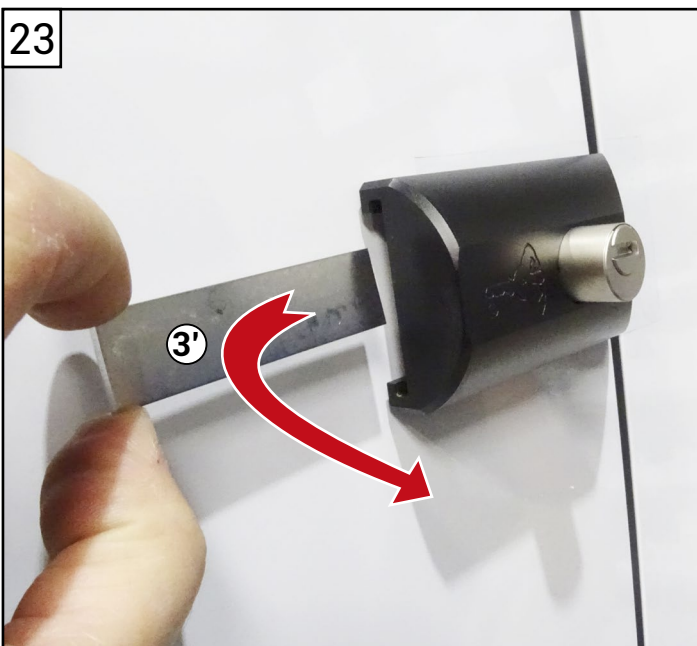
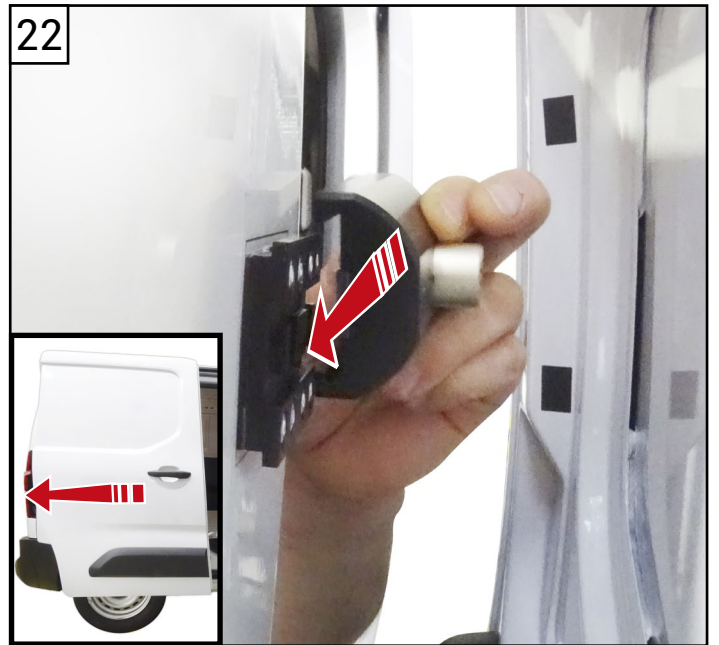
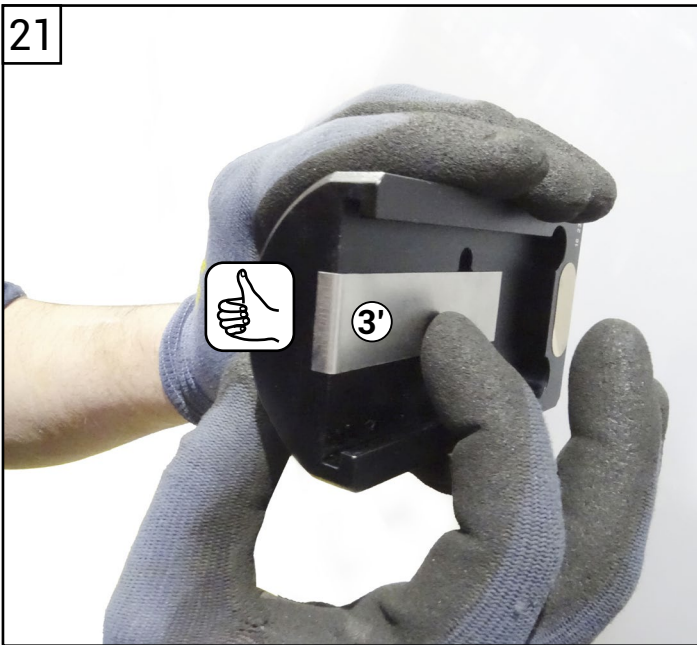
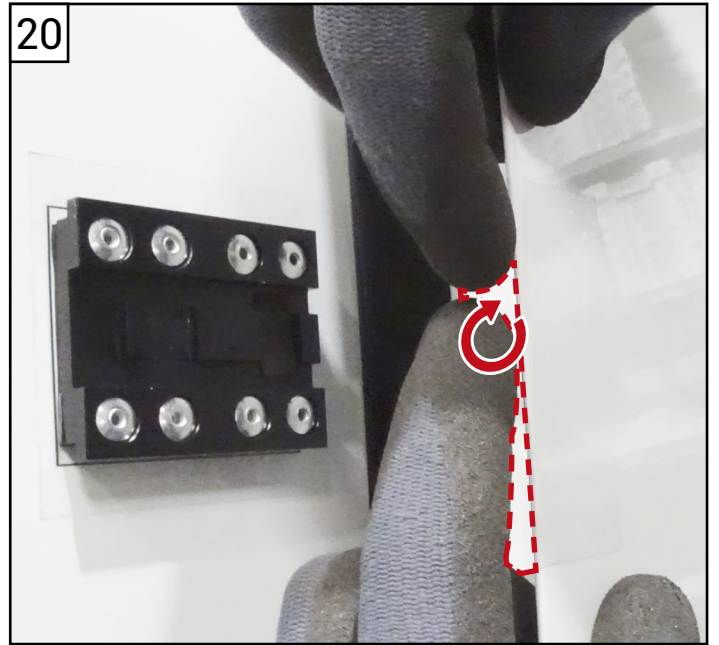
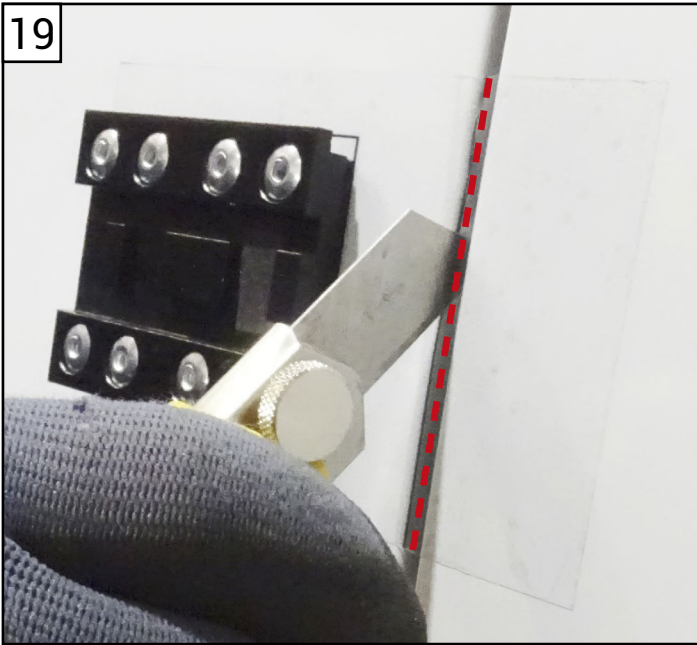


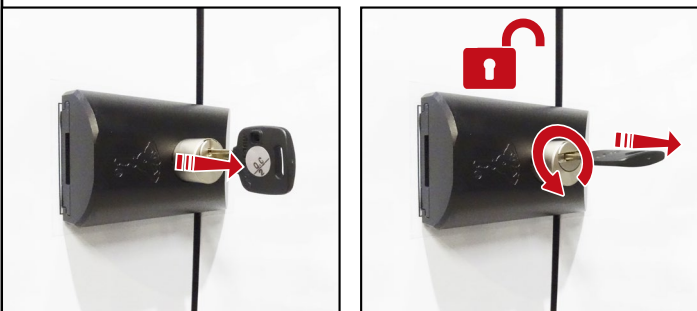
















### **About Mul-T-Lock®**

For nearly five decades, Mul-T-Lock has been a worldwide leader in developing, manufacturing, and marketing high-security access solutions for institutional, commercial, industrial, and residential applications.

We provide a wide range of high-security and high-quality locking solutions. The company holds dozens of international patents for our innovative user-friendly products, which provide safety, security, and convenience to millions of people across the world.

Mul-T-Lock is fully owned by the ASSA ABLOY Group, a global leader in access solutions with a proven track record of helping billions of people experience a more open world through innovations that enable safe, secure and convenient access to physical and digital places.



[www.mul-t-lock.com](http://www.mul-t-lock.com)

The Mul-T-Lock name, the muscleman logo, in the field of locking products, and the MTL name and/or any other trademark, marked by a ™ or ® sign, are registered / pending or otherwise owned trademarks of Mul-T-Lock Ltd. and/or its affiliates 2023. 22105045 A

Part of ASSA ABLOY